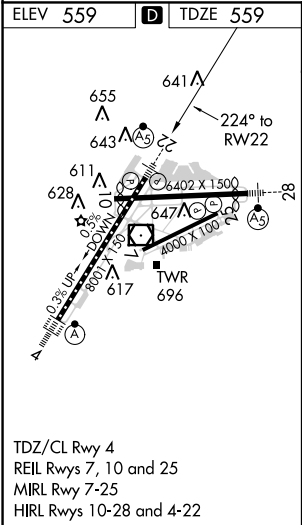
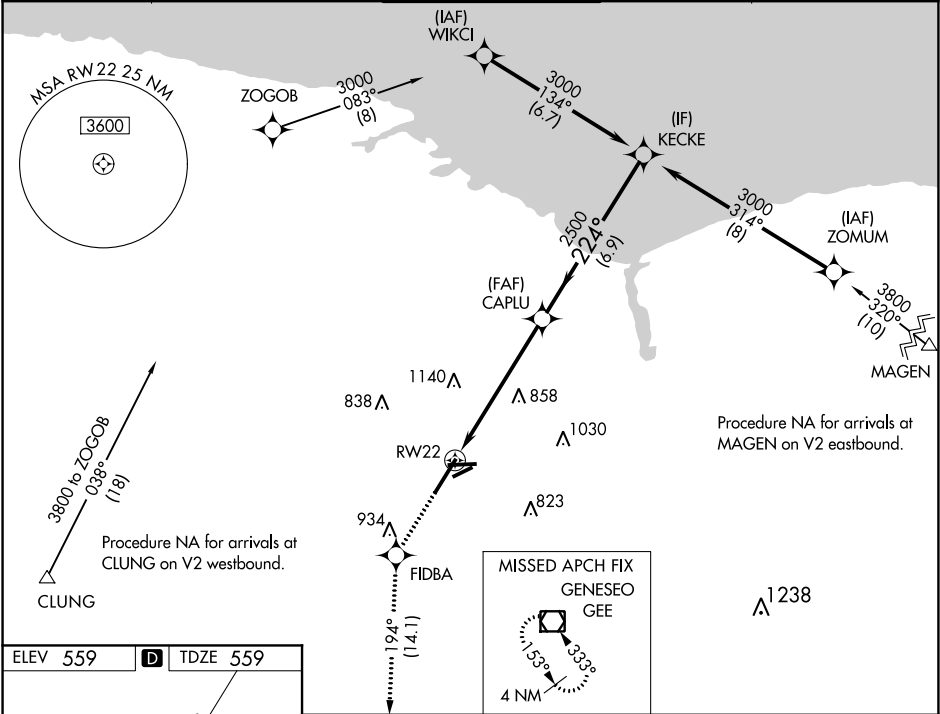


WAAS CH 73016 W22A	APP CRS 224°	Rwy Idg TDZE 559 Apt Elev 559
--	------------------------	---

RNAV (GPS) RWY 22
FREDERICK DOUGLASS-GREATER ROCHESTER INTL (ROC)

 	For uncompensated Baro-VNAV systems, LNAV/VNAV NA below -18°C (0°F) or above 54°C (130°F). DME/DME RNP-0.3 NA. **RVR 1800 authorized with use of FD or AP or HUD to DA.	MALSR 	MISSED APPROACH: Climb to 4000 direct FIDBA and on track 194° to GEE VOR/DME and hold.
------	--	-----------	--

ATIS 124.825	ROCHESTER APP CON 119.55 269.6	ROCHESTER TOWER 118.3 254.3	GND CON 121.7	CLNC DEL 118.8 343.65
------------------------	--	---------------------------------------	-------------------------	---------------------------------



4000	FIDBA	tr 194°	GEE	
<p>*LNAV only.</p> <p>RW22</p> <p>1.2 NM</p> <p>4.7 NM</p> <p>6.9 NM</p> <p>CAPLU</p> <p>2500</p> <p>224°</p> <p>2500</p> <p>KECKE</p> <p>3000</p> <p>GP 3.00°</p> <p>TCH 50</p>				
CATEGORY	A	B	C	D
LPV DA	**759/24 200 (200-½)			
LNAV/VNAV DA	859/25 300 (300-½)			
LNAV MDA	980/24	421 (500-½)	980/40	421 (500-¾)
CIRCLING	1060-1	501 (600-1)	1500-2¾ 941 (1000-2¾)	1500-3 941 (1000-3)

NE-2, 03 DEC 2020 to 31 DEC 2020

NE-2, 03 DEC 2020 to 31 DEC 2020