


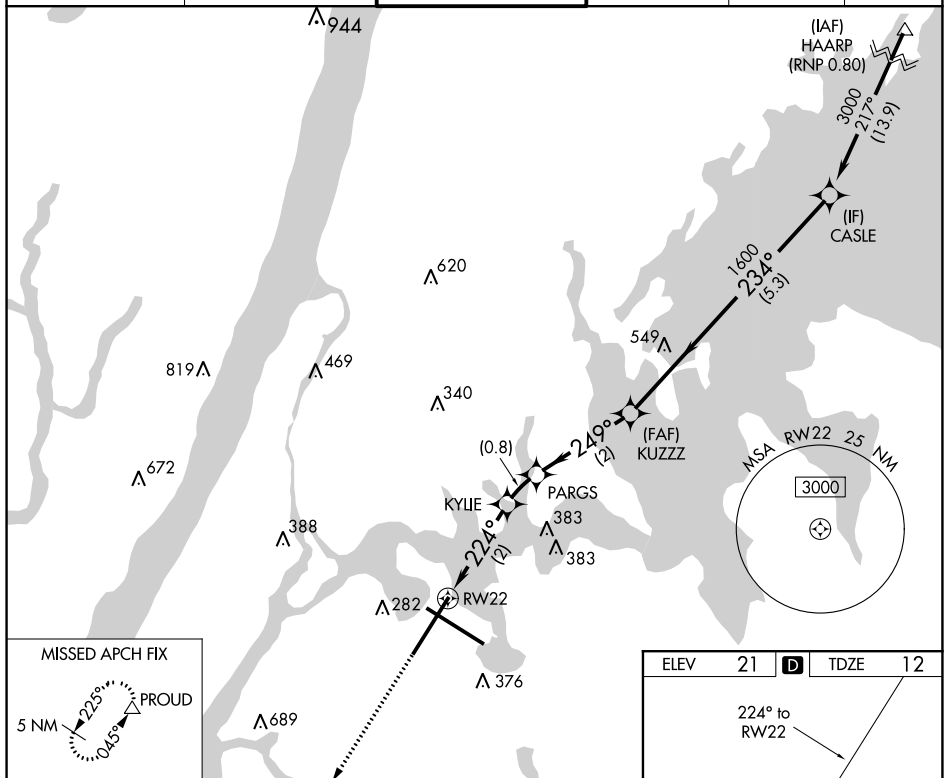


APP CRS 224°	Rwy Idg TDZE Apt Elev	7001 12 21
------------------------	-----------------------------	---------------------------------------

RNAV (RNP) Z RWY 22
LAGUARDIA (LGA)

 NA	For uncompensated Baro-VNAV systems, procedure NA below -11°C (13°F) or above 54°C (130°F). RF required. GPS required. For inop ALS, increase RNP 0.30 visibility to 1 3/8 SM.	 ALSF-1 	MISSED APPROACH: Climb to 3000 direct PROUD and hold, continue climb-in-hold to 3000. *Missed approach requires minimum climb of 397 feet per NM to 540.
--	--	---	---

D-ATIS ARR	125.95	NEW YORK APP CON	LAGUARDIA TOWER	GND CON	CLNC DEL	CPDLC
D-ATIS DEP	127.05	120.8 263.0	118.7 263.0	121.7 263.0	135.2	



3000 ↑	PROUD △	VGS1 and RNAV glidepath not coincident (VGS1 Angle 3.00°/TCH 67°).			
		KYLIE	PARGS	KUZZZ	CASLE
		704	947	1600	3000
		224°	249°	234°	
		RW22		1600	GP 3.00° TCH 52
		2 NM	0.8 NM	2 NM	5.3 NM
CATEGORY		A	B	C	D
RNP 0.30 DA*		384/40		372 (400-¾)	
RNP 0.30 DA		437/50		425 (500-1)	

AUTHORIZATION REQUIRED

Diagram illustrating the HIRL (High Intensity Runway Light) system for Runway 22 (RW22) at Kona International Airport. The diagram shows the runway layout, including Runway 22 (RW22) and Runway 13-31. Key features include:

- Runway 22 (RW22):** Indicated by a heading of 224°.
- Runway 13-31:** Indicated by a heading of 130°.
- TDZE (Touchdown Zone Elevation):** Marked on Runway 22.
- Lighting System:** Includes HIRL (High Intensity Runway Light) and REIL (Runway End Identifier Light) for Runway 31.
- Obstacles:** Marked with 'A5' and 'H'.
- Navigation Aids:** Includes a TWR (Tower) at 240 feet.