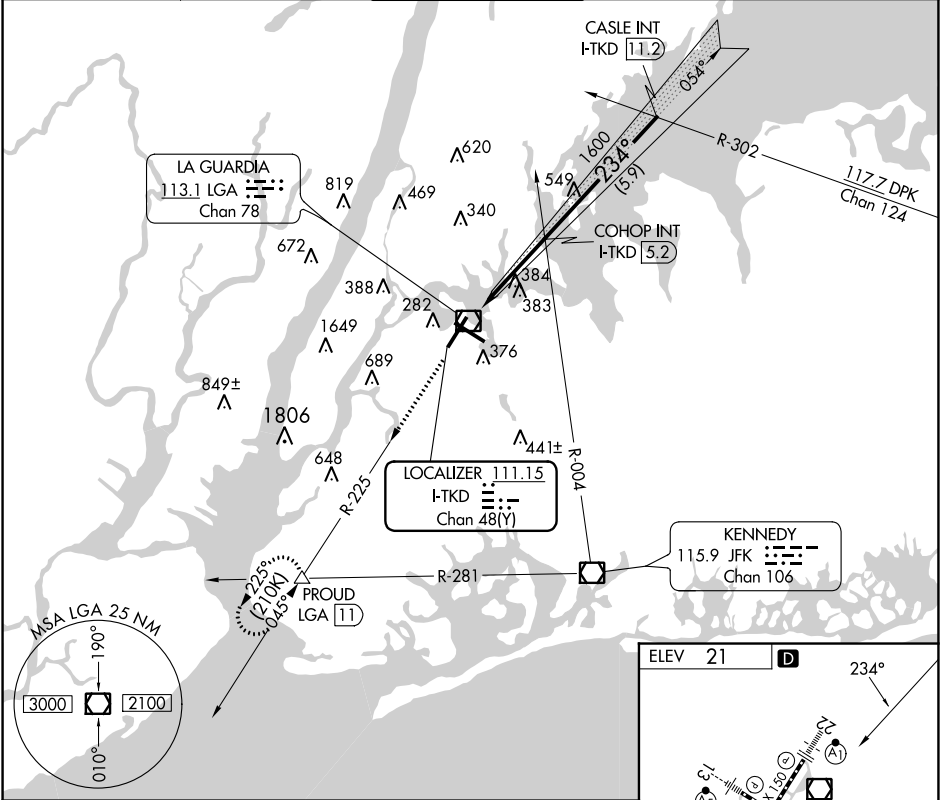


LOC/DME I-TKD <b>111.15</b> Chan <b>48</b> (Y)	APP CRS <b>234°</b>	Rwy Idg TDZE Apt Elev <b>N/A</b> <b>N/A</b> <b>21</b>
------------------------------------------------------	------------------------	----------------------------------------------------------------------

LDA-A

LAGUARDIA (LGA)

RADAR required for procedure entry.		MISSED APPROACH: Climb to 3000 on LGA VOR/DME R-225 to PROUD INT and hold, continue climb-in-hold to 3000.		
Auto pilot coupled approach NA.				
D-ATIS ARR <b>125.95</b> D-ATIS DEP <b>127.05</b>	NEW YORK APP CON <b>120.8 263.0</b>	LAGUARDIA TOWER <b>118.7 263.0</b>	GND CON <b>121.7 263.0</b>	CLNC DEL <b>135.2</b>
CPDLC				



3000 ↑	LGA R-225	PROUD △
-----------	--------------	------------

Diagram showing a flight path profile with altitudes and distances:

- Altitude: 3000
- Distance segments: 0.8, 3.2 NM, 5.9 NM
- Altitude markers: 1600, 3000
- Waypoints: COHOP INT I-TKD 5.2, CASLE INT I-TKD 11.2
- Angle: 234°

CATEGORY	A	B	C	D
<b>C</b> CIRCLING	700-1 679 (700-1)		1080-3 1059 (1100-3)	1260-3 1239 (1300-3)

FAF to MAP 3.2 NM					
Knots	60	90	120	150	180
Min:Sec	3:12	2:08	1:36	1:17	1:04

Diagram showing a map view of the flight path with various symbols and labels:

- Altitude: 3000
- Distance: 700
- Altitude: 700 x 150
- Altitude: 3000
- Altitude: 1600
- Altitude: 3000
- Altitude: 1600
- Altitude: 3000
- Altitude: 1600
- Altitude: 3000
- Altitude: 1600
- Altitude: 3000
- Altitude: 1600
- Altitude: 3000
- Altitude: 1600
- Altitude: 3000
- Altitude: 1600
- Altitude: 3000
- Altitude: 1600
- Altitude: 3000
- Altitude: 1600
- Altitude: 3000
- Altitude: 1600
- Altitude: 3000
- Altitude: 1600
- Altitude: 3000
- Altitude: 1600
- Altitude: 3000
- Altitude: 1600
- Altitude: 3000
- Altitude: 1600
- Altitude: 3000
- Altitude: 1600
- Altitude: 3000
- Altitude: 1600
- Altitude: 3000
- Altitude: 1600
- Altitude: 3000
- Altitude: 1600
- Altitude: 3000
- Altitude: 1600
- Altitude: 3000
- Altitude: 1600
- Altitude: 3000
- Altitude: 1600
- Altitude: 3000
- Altitude: 1600
- Altitude: 3000
- Altitude: 1600
- Altitude: 3000
- Altitude: 1600
- Altitude: 3000
- Altitude: 1600
- Altitude: 3000
- Altitude: 1600
- Altitude: 3000
- Altitude: 1600
- Altitude: 3000
- Altitude: 1600
- Altitude: 3000
- Altitude: 1600
- Altitude: 3000
- Altitude: 1600
- Altitude: 3000
- Altitude: 1600
- Altitude: 3000
- Altitude: 1600
- Altitude: 3000
- Altitude: 1600
- Altitude: 3000
- Altitude: 1600
- Altitude: 3000
- Altitude: 1600
- Altitude: 3000
- Altitude: 1600
- Altitude: 3000
- Altitude: 1600
- Altitude: 3000
- Altitude: 1600
- Altitude: 3000
- Altitude: 1600
- Altitude: 3000
- Altitude: 1600
- Altitude: 3000
- Altitude: 1600
- Altitude: 3000
- Altitude: 1600
- Altitude: 3000
- Altitude: 1600
- Altitude: 3000
- Altitude: 1600
- Altitude: 3000
- Altitude: 1600
- Altitude: 3000
- Altitude: 1600
- Altitude: 3000
- Altitude: 1600
- Altitude: 3000
- Altitude: 1600
- Altitude: 3000
- Altitude: 1600
- Altitude: 3000
- Altitude: 1600
- Altitude: 3000
- Altitude: 1600
- Altitude: 3000
- Altitude: 1600
- Altitude: 3000
- Altitude: 1600
- Altitude: 3000
- Altitude: 1600
- Altitude: 3000
- Altitude: 1600
- Altitude: 3000
- Altitude: 1600
- Altitude: 3000
- Altitude: 1600
- Altitude: 3000
- Altitude: 1600
- Altitude: 3000
- Altitude: 1600
- Altitude: 3000
- Altitude: 1600
- Altitude: 3000
- Altitude: 1600
- Altitude: 3000
- Altitude: 1600
- Altitude: 3000
- Altitude: 1600
- Altitude: 3000
- Altitude: 1600
- Altitude: 3000
- Altitude: 1600
- Altitude: 3000
- Altitude: 1600
- Altitude: 3000
- Altitude: 1600
- Altitude: 3000
- Altitude: 1600
- Altitude: 3000
- Altitude: 1600
- Altitude: 3000
- Altitude: 1600
- Altitude: 3000
- Altitude: 1600
- Altitude: 3000
- Altitude: 1600
- Altitude: 3000
- Altitude: 1600
- Altitude: 3000
- Altitude: 1600
- Altitude: 3000
- Altitude: 1600
- Altitude: 3000
- Altitude: 1600
- Altitude: 3000
- Altitude: 1600
- Altitude: 3000
- Altitude: 1600
- Altitude: 3000
- Altitude: 1600
- Altitude: 3000
- Altitude: 1600
- Altitude: 3000
- Altitude: 1600
- Altitude: 3000
- Altitude: 1600
- Altitude: 3000
- Altitude: 1600
- Altitude: 3000
- Altitude: 1600
- Altitude: 3000
- Altitude: 1600
- Altitude: 3000
- Altitude: 1600
- Altitude: 3000
- Altitude: 1600
- Altitude: 3000
- Altitude: 1600
- Altitude: 3000
- Altitude: 1600
- Altitude: 3000
- Altitude: 1600
- Altitude: 3000
- Altitude: 1600
- Altitude: 3000
- Altitude: 1600
- Altitude: 3000
- Altitude: 1600
- Altitude: 3000
- Altitude: 1600
- Altitude: 3000
- Altitude: 1600
- Altitude: 3000
- Altitude: 1600
- Altitude: 3000
- Altitude: 1600
- Altitude: 3000
- Altitude: 1600
- Altitude: 3000
- Altitude: 1600
- Altitude: 3000
- Altitude: 1600
- Altitude: 3000
- Altitude: 1600
- Altitude: 3000
- Altitude: 1600
- Altitude: 3000
- Altitude: 1600
- Altitude: 3000
- Altitude: 1600
- Altitude: 3000
- Altitude: 1600
- Altitude: 3000
- Altitude: 1600
- Altitude: 3000
- Altitude: 1600
- Altitude: 3000
- Altitude: 1600
- Altitude: 3000
- Altitude: 1600
- Altitude: 3000
- Altitude: 1600
- Altitude: 3000
- Altitude: 1600
- Altitude: 3000
- Altitude: 1600
- Altitude: 3000
- Altitude: 1600
- Altitude: 3000
- Altitude: 1600
- Altitude: 3000
- Altitude: 1600
- Altitude: 3000
- Altitude: 1600
- Altitude: 3000
- Altitude: 1600
- Altitude: 3000
- Altitude: 1600
- Altitude: 3000
- Altitude: 1600
- Altitude: 3000
- Altitude: 1600
- Altitude: 3000
- Altitude: 1600
- Altitude: 3000
- Altitude: 1600
- Altitude: 3000
- Altitude: 1600
- Altitude: 3000
- Altitude: 1600
- Altitude: 3000
- Altitude: 1600
- Altitude: 3000
- Altitude: 1600
- Altitude: 3000
- Altitude: 1600
- Altitude: 3000
- Altitude: 1600
- Altitude: 3000
- Altitude: 1600
- Altitude: 3000
- Altitude: 1600
- Altitude: 3000
- Altitude: 1600
- Altitude: 3000
- Altitude: 1600
- Altitude: 3000
- Altitude: 1600
- Altitude: 3000
- Altitude: 1600
- Altitude: 3000
- Altitude: 1600
- Altitude: 3000
- Altitude: 1600
- Altitude: 3000
- Altitude: 1600
- Altitude: 3000
- Altitude: 1600
- Altitude: 3000
- Altitude: 1600
- Altitude: 3000
- Altitude: 1600
- Altitude: 3000
- Altitude: 1600
- Altitude: 3000
- Altitude: 1600
- Altitude: 3000
- Altitude: 1600
- Altitude: 3000
- Altitude: 1600
- Altitude: 3000
- Altitude: 1600
- Altitude: 3000
- Altitude: 1600
- Altitude: 3000
- Altitude: 1600
- Altitude: 3000
- Altitude: 1600
- Altitude: 3000
- Altitude: 1600
- Altitude: 3000
- Altitude: 1600
- Altitude: 3000
- Altitude: 1600
- Altitude: 3000
- Altitude: 1600
- Altitude: 3000
- Altitude: 1600
- Altitude: 3000
- Altitude: 1600
- Altitude: 3000
- Altitude: 1600
- Altitude: 3000
- Altitude: 1600
- Altitude: 3000
- Altitude: 1600
- Altitude: 3000
- Altitude: 1600
- Altitude: 3000
- Altitude: 1600
- Altitude: 3000
- Altitude: 1600
- Altitude: 3000
- Altitude: 1600
- Altitude: 3000
- Altitude: 1600
- Altitude: 3000
- Altitude: 1600
- Altitude: 3000
- Altitude: 1600
- Altitude: 3000
- Altitude: 1600
- Altitude: 3000
- Altitude: 1600
- Altitude: 3000
- Altitude: 1600
- Altitude: 3000
- Altitude: 1600
- Altitude: 3000
- Altitude: 1600
- Altitude: 3000
- Altitude: 1600
- Altitude: 3000
- Altitude: 1600
- Altitude: 3000
- Altitude: 1600
- Altitude: 3000
- Altitude: 1600
- Altitude: 3000
- Altitude: 1600
- Altitude: 3000
- Altitude: 1600
- Altitude: 3000
- Altitude: 1600
- Altitude: 3000
- Altitude: 1600
- Altitude: 3000
- Altitude: 1600
- Altitude: 3000
- Altitude: 1600
- Altitude: 3000
- Altitude: 1600
- Altitude: 3000
- Altitude: 1600
- Altitude: 3000
- Altitude: 1600
- Altitude: 3000
- Altitude: 1600
- Altitude: 3000
- Altitude: 1600
- Altitude: 3000
- Altitude: 1600
- Altitude: 3000
- Altitude: 1600
- Altitude: 3000
- Altitude: 1600
- Altitude: 3000
- Altitude: 1600
- Altitude: 3000
- Altitude: 1600
- Altitude: 3000
- Altitude: 1600
- Altitude: 3000
- Altitude: 1600
- Altitude: 3000
- Altitude: 1600
- Altitude: 3000
- Altitude: 1600
- Altitude: 3000
- Altitude: 1600
- Altitude: 3000
- Altitude: 1600
- Altitude: 3000
- Altitude: 1600
- Altitude: 3000
- Altitude: 1600
- Altitude: 3000
- Altitude: 1600
- Altitude: 3000
- Altitude: 1600
- Altitude: 3000
- Altitude: 1600
- Altitude: 3000
- Altitude: 1600
- Altitude: 3000
- Altitude: 1600
- Altitude: 3000
- Altitude: 1600
- Altitude: 3000
- Altitude: 1600
- Altitude: 3000
- Altitude: 1600
- Altitude: 3000
- Altitude: 1600
- Altitude: 3000
- Altitude: 1600
- Altitude: 3000
- Altitude: 1600
- Altitude: 3000
- Altitude: 1600
- Altitude: 3000
- Altitude: 1600
- Altitude: 3000
- Altitude: 1600
- Altitude: 3000
- Altitude: 1600
- Altitude: 3000
- Altitude: 1600
- Altitude: 3000
- Altitude: 1600
- Altitude: 3000
- Altitude: 1600
- Altitude: 3000
- Altitude: 1600
- Altitude: 3000
- Altitude: 1600
- Altitude: 3000
- Altitude: 1600
- Altitude: 3000
- Altitude: 1600
- Altitude: 3000
- Altitude: 1600
- Altitude: 3000
- Altitude: 1600
- 

NE-2, 03 DEC 2020 to 31 DEC 2020

NE-2, 03 DEC 2020 to 31 DEC 2020