

LOC/DME I-GDI	APP CRS	Rwy Idg	7003
108.5	134°	TDZE	12
Chan 22		Apt Elev	21

ILS or LOC RWY 13

LAGUARDIA (LGA)

Radar required for procedure entry. DME or RADAR required for LOC only.

MALSR

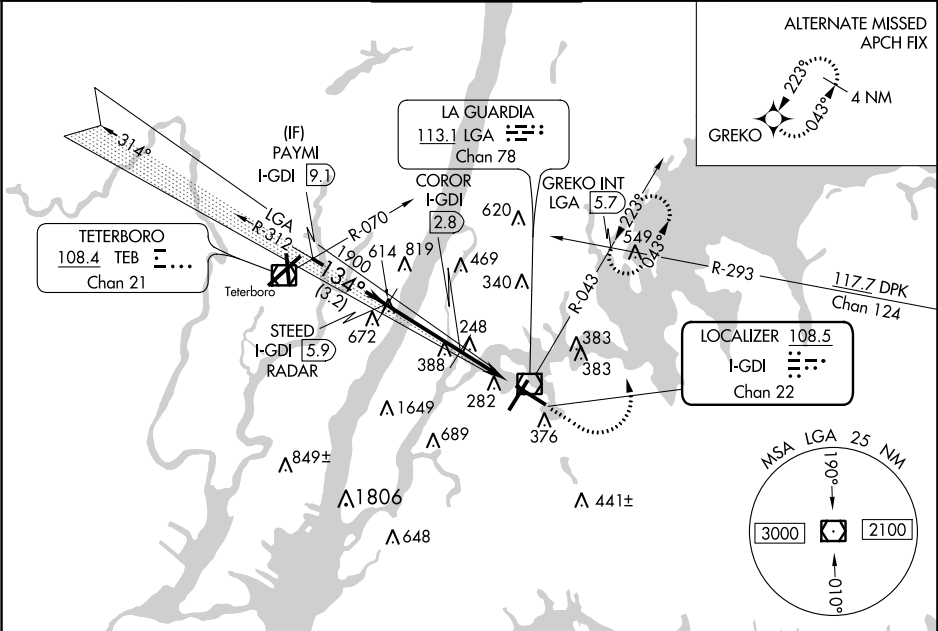
MISSED APPROACH: Climb to 800 then climbing left turn to 2000 on LGA VOR/DME R-043 to GREKO INT/LGA 5.7 DME and hold, continue climb-in-hold to 2000.

▼

▲

For inop ALS, increase S-LOC 13 Cats C/D visibility to 2½ SM.

D-ATIS ARR 125.95	NEW YORK APP CON 120.8 263.0	LAGUARDIA TOWER 118.7 263.0	GND CON 121.7 263.0	CLNC DEL 135.2	CPDLC
D-ATIS DEP 127.05					



VGSI and ILS glidepath not coincident (VGSI Angle 3.10/TCH 55).

800

2000

GREKO INT

134° 5.5 NM from FAF

1900 when assigned by ATC * LOC only.

PAYMI I-GDI 9.1

STEED I-GDI 5.9 RADAR

COROR I-GDI 2.8

I-GDI 1.7

LGA R-043

2800

GS 3.10° TCH 49°

134°

1900

* 800

3.2 NM

3.1 NM

1.1 NM

1.3 NM

CATEGORY	A	B	C	D
S-ILS 13	212/18 200 (200-½)			
S-LOC 13	800/24 788 (800-½)	800/40 788 (800-¾)	800-1¾ 788 (800-1¾)	
CIRCLING	800-1 779 (800-1)	800-1¼ 779 (800-1¼)	1080-3 1059 (1100-3)	1260-3 1239 (1300-3)
COROR FIX MINIMUMS				
S-LOC 13	500/24 488 (500-½)	500/50 488 (500-1)		
CIRCLING	700-1 679 (700-1)	1080-3 1059 (1100-3)	1260-3 1239 (1300-3)	

ELEV 21

TDZE 12

TWR 240

7003 X 150

7003 X 150

TDZ/CL Rws 4, 13 and 22
HIRL Rws 4-22 and 13-31
REIL Rwy 31

FAF to MAP 5.5 NM

Knots	60	90	120	150	180
Min:Sec	5:30	3:40	2:45	2:12	1:50