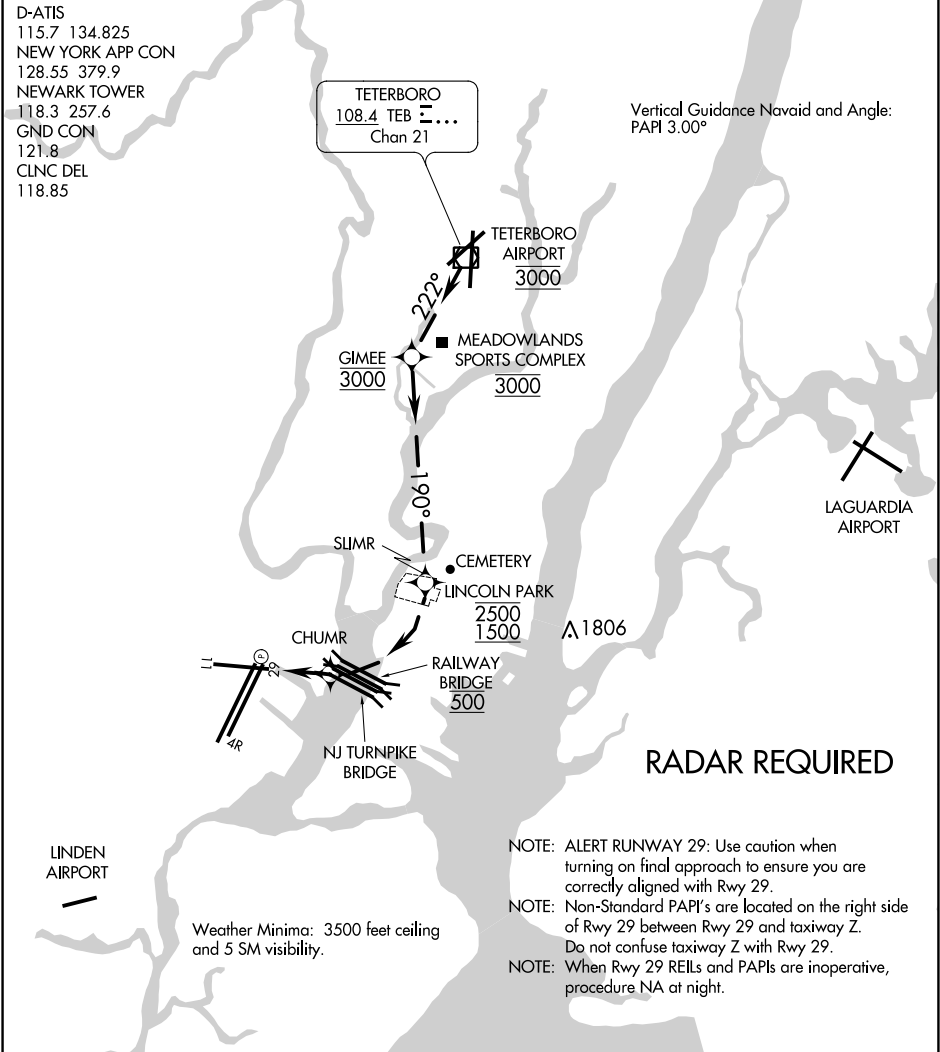


STADIUM VISUAL RWY 29

AL-285 (FAA)

NEWARK LIBERTY INTL (EWR)
NEWARK, NEW JERSEY



NE-2, 03 DEC 2020 to 31 DEC 2020

NE-2, 03 DEC 2020 to 31 DEC 2020

NM	1	2	3	4	5	6	7	8	9	10	11	12	13	14	15	16	17	18	19
----	---	---	---	---	---	---	---	---	---	----	----	----	----	----	----	----	----	----	----

STADIUM VISUAL RUNWAY 29

When cleared for the Stadium Visual Approach, proceed direct to Teterboro Airport and cross it at 3000' proceed on 222° heading to west end of Meadowlands Sports Complex (GIMEE). Cross GIMEE at 3000'. Turn left at GIMEE and continue along left (east) side of river to Lincoln Park. Plan to be in final landing configuration by Lincoln Park. Turn right and descend to cross Railway Bridge at 500'.

STADIUM VISUAL RWY 29

40°42'N-74°10'W

NEWARK, NEW JERSEY
NEWARK LIBERTY INTL (EWR)