

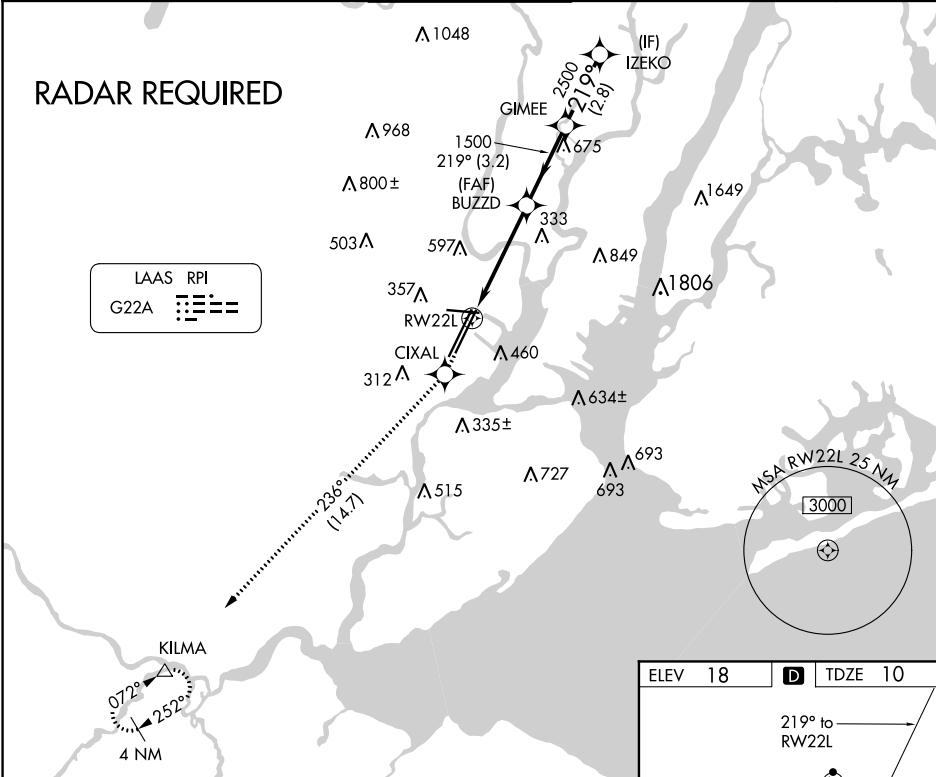
GBAS CH <b>21494</b> <b>G22A</b>	APP CRS <b>219°</b>	Rwy Idg <b>8207</b> TDZE <b>10</b> Apt Elev <b>18</b>
--	------------------------	---

GLS RWY 22L

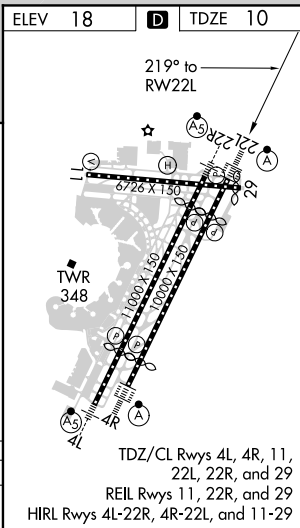
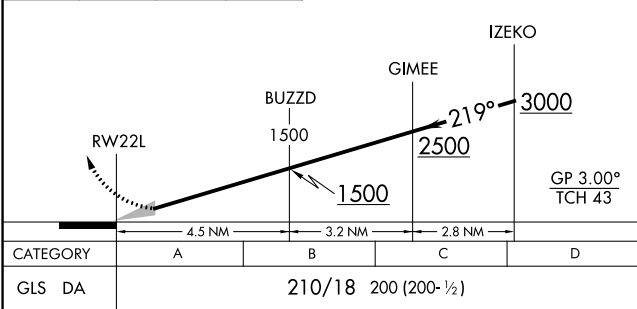
NEWARK LIBERTY INTL (EWR)

<b>NA</b>	GPS Required. For inoperative MALS increase GLS all Cats visibility to RVR 4000. DME/DME RNP-0.3 NA. Autopilot coupled approach NA below 210.	ALSIF-2 	MISSED APPROACH: Climb to 3000 direct CIXAL and on track 236° to KILMA and hold.
-----------	---	-------------	--

D-ATIS <b>115.7 134.825</b>	NEW YORK APP CON <b>128.55 379.9</b>	NEWARK TOWER <b>118.3 257.6</b>	GND CON <b>121.8</b>	CLNC DEL <b>118.85</b>	CPDLC
--------------------------------	---	------------------------------------	-------------------------	---------------------------	-------



3000 ↑	CIXAL 	Ir 236°	KILMA △	VGSI and GLS glidepath not coincident (VGSI Angle 3.00/TCH 60).
-----------	-----------	---------	------------	---



GLS RWY 22L

NE-2, 03 DEC 2020 to 31 DEC 2020

NE-2, 03 DEC 2020 to 31 DEC 2020