

WRIGHTSTOWN, NEW JERSEY

VOR/DME or TACAN RWY 6

20254

VORTAC GXU 110.6 Chan 43	APCH CRS 044°	Rwy Idg 10,014 TDZE 131 Arprt Elev 141
--	-------------------------	---

AL-150 [USAF]

MC GUIRE FLD,
(JOINT BASE MC GUIRE DIX LAKEHURST) (KWRI)

RADAR REQUIRED when R-5001 and/or R-5002 is active.

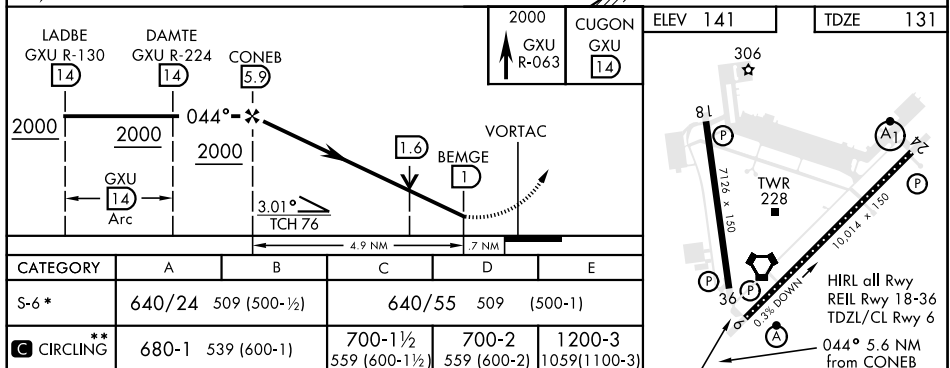
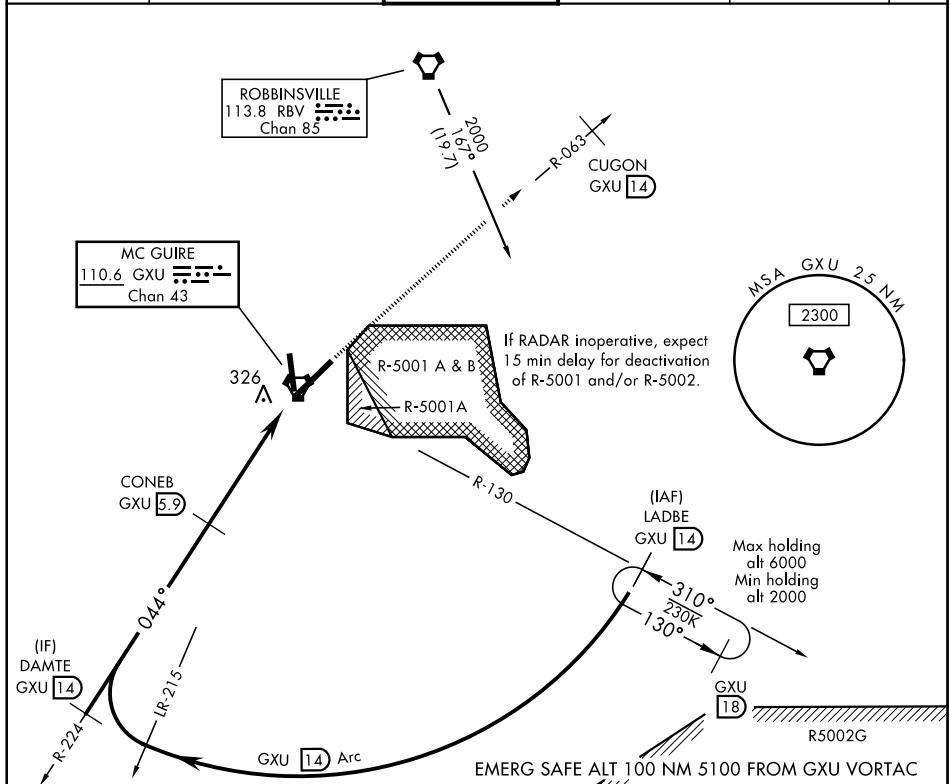
ALS-F-2

MISSED APPROACH: Climb to 2000 via GXU VORTAC
R-063 to CUGON, expect further clearance from ATC.

▼ * When ALS inop, increase CAT AB RVR to 55
and vis to 1 mile, CAT CDE vis to 1½ miles.
** Circling E of airfield NA when R-5001 A/B active.



ATIS 110.6 270.1	MC GUIRE APP CON 126.475 363.8	MC GUIRE TOWER 118.65 255.6	GND CON 121.8 275.8	CLNC DEL 135.2 335.8	PAR
----------------------------	--	---------------------------------------	-------------------------------	--------------------------------	-----



WRIGHTSTOWN, NEW JERSEY

40°01'N-74°36'W

MC GUIRE FLD,

Amtd 6 10SEP20

(JOINT BASE MC GUIRE DIX LAKEHURST) (KWRI)

VOR/DME or TACAN RWY 6

NE-2, 03 DEC 2020 to 31 DEC 2020