

WRIGHTSTOWN, NEW JERSEY

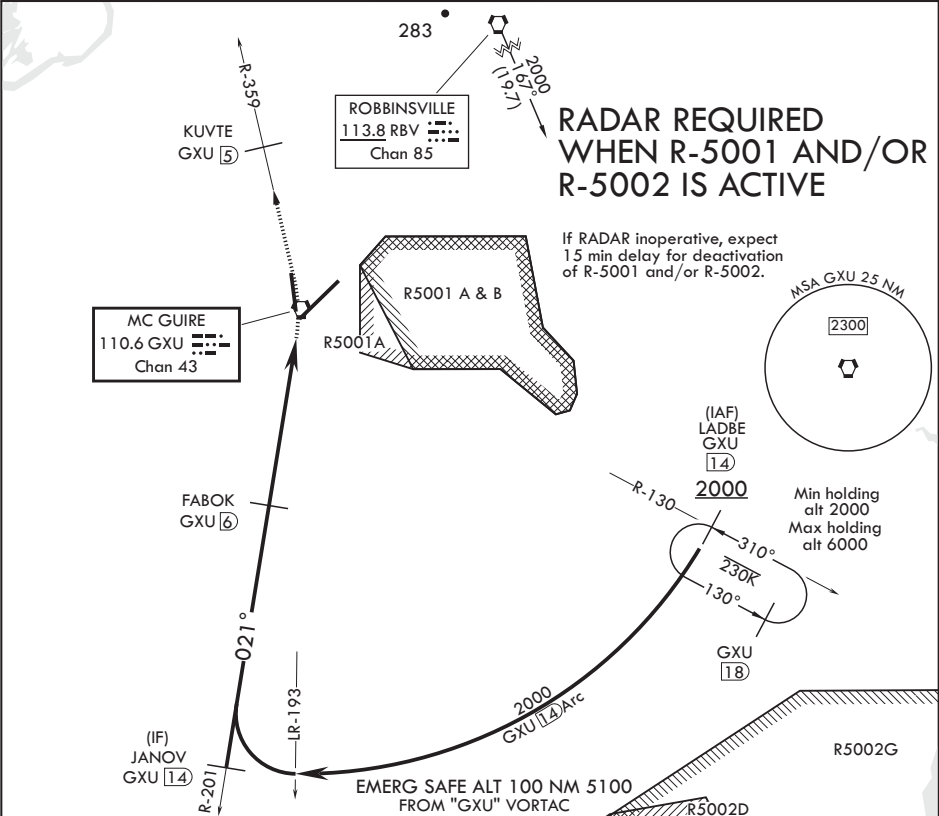
VOR/DME or TACAN RWY 36

VORTAC GXU 110.6 Chan 43	APCH CRS 021°	Rwy Idg TDZE Arpt Elev	7126 129 141
--------------------------------	------------------	------------------------------	--------------------

AL-150 (USAF)
MC GUIRE FIELD (JOINT BASE MC GUIRE DIX LAKEHURST) (KWRI)

▼ * Circling East of Airfield NA when R-5001 A/B active.	MISSED APPROACH: Climb to 2000 via GXU R-359 to KUVTE, expect further clearance with ATC.
--	---

ATIS 110.6 270.1	MC GUIRE APP CON 126.475 363.8	TOWER 118.65 255.6	GND CON 121.8 275.8	CLNC DEL 135.2 335.8	PAR
---------------------	-----------------------------------	-----------------------	------------------------	-------------------------	-----



						2000		021°		2000		2.92°		TCH 46		5.1 NM		0.8	
CATEGORY		A		B		C		D		E									
S-36		600-1		471 (500-1)		600-1 1/8		471		(500-1 1/8)									
CIRCLING*		680-1		539 (600-1)		700-1 1/2 559 (600-1 1/2)		700-2 559 (600-2)		1200-3 1059 (1100-3)									

BCN 306

TWR 228

81

36

7156 x 150

10014 x 150

0.3% UP

021° 5.9NM from FAF

HIRL all Rwy's

REIL Rwy's 18, 36

TDZ/CL Rwy

WRIGHTSTOWN, NEW JERSEY

Amdt 6 10SEP20

MC GUIRE FIELD (JOINT BASE MC GUIRE DIX LAKEHURST) (KWRI)

40°01'N - 74°36'W

VOR/DME or TACAN RWY 36

NE-2, 03 DEC 2020 to 31 DEC 2020

NE-2, 03 DEC 2020 to 31 DEC 2020