

WAAS CH <b>77511</b> <b>W23A</b>	APP CRS <b>235°</b>	Rwy Idg <b>7569</b> TDZE <b>726</b> Apt Elev <b>727</b>
--	------------------------	---

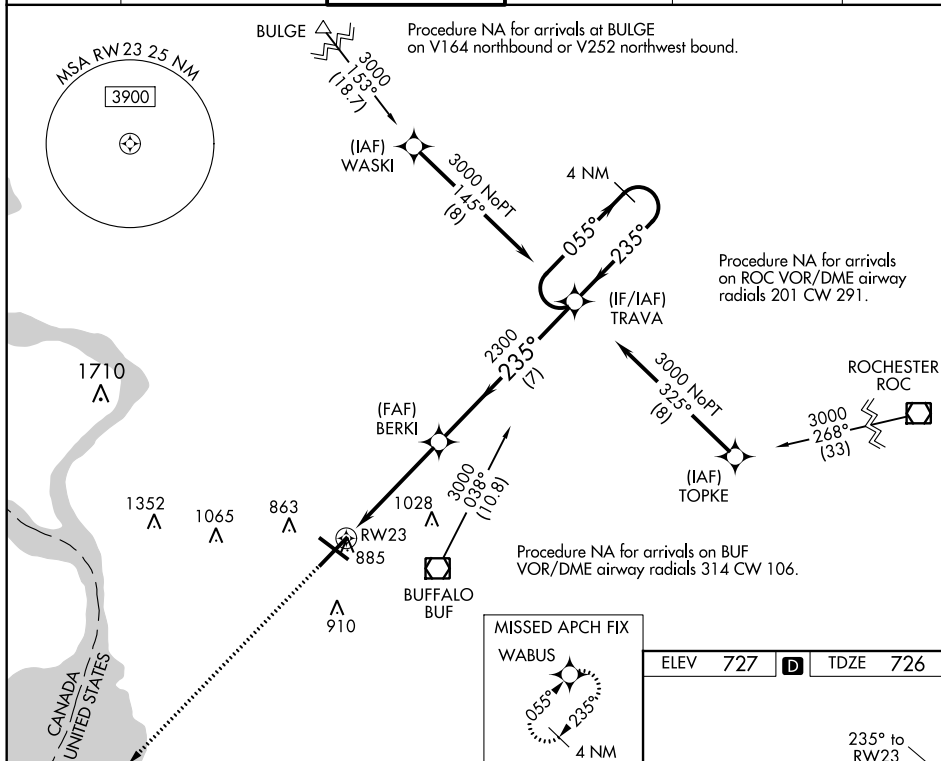
RNAV (GPS) Y RWY 23  
BUFFALO NIAGARA INTL (BUF)

**T** For uncompensated Baro-VNAV systems, LNAV/VNAV NA below -17°C (-2°F) or above 54°C (130°F). DME/DME RNP-0.3 NA.

ALSF-2



D-ATIS 135.35	BUFFALO APP CON 126.15 263.125	BUFFALO TOWER 120.5 257.8	GND CON 133.2 257.8	CLNC DEL 124.7 257.8	CPDLC
------------------	-----------------------------------	------------------------------	------------------------	-------------------------	-------

[illegible]

The diagram illustrates the intersection of Runway 14 (REIL) and Taxiway A (TWY A). Runway 14 is oriented along the 090° magnetic heading, while Taxiway A runs parallel to it. Key features include:

- Runway 14 (REIL):** Indicated by a solid black line with a dashed centerline. It has a width of 80 feet and a length of 1,600 feet.
- Taxiway A (TWY A):** Indicated by a solid black line with a dashed centerline. It has a width of 80 feet and a length of 1,600 feet.
- Navigational Aids:** Various lights and signs are shown, including runway edge lights, taxiway edge lights, and centerline lights. Specific markings include "761 X 150" and "8825 X 150".
- Other Features:** A "TWR 885" tower location is marked with a square symbol. A "32'±" dimension is noted near the intersection. A "0.9% UP" slope indicator is present on the left side of the diagram.