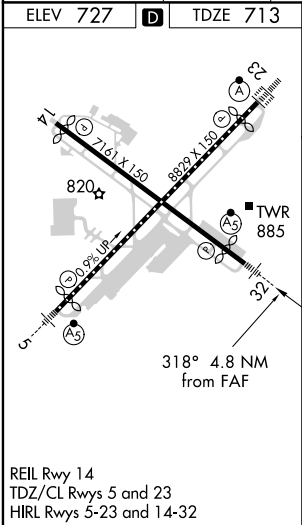
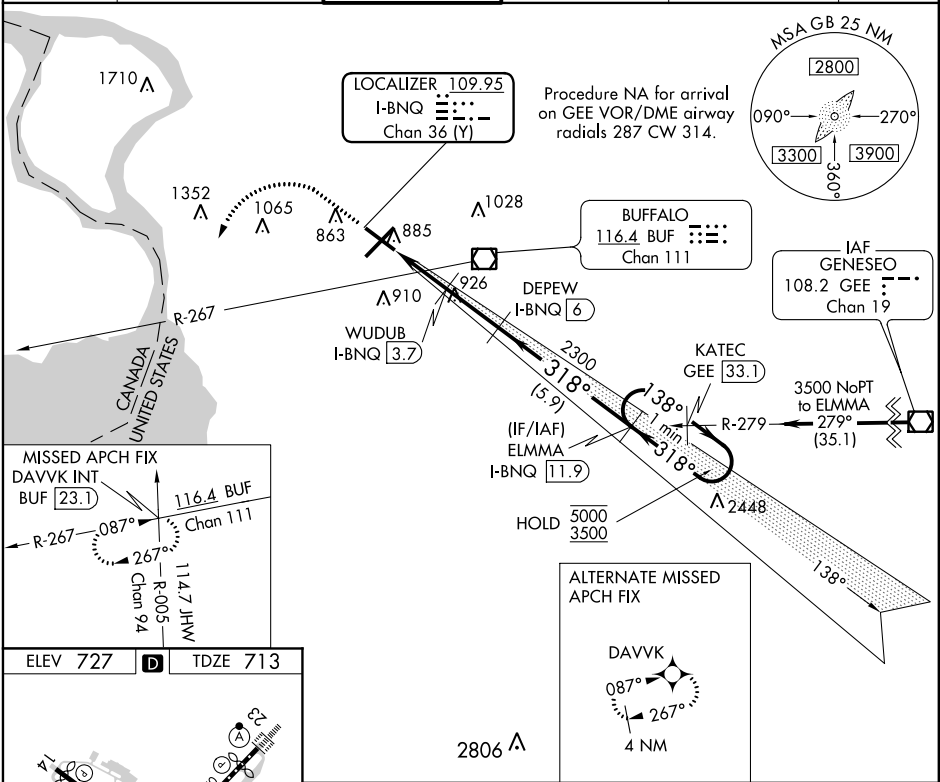


| | | |
|--|------------------------|--|
| LOC/DME I-BNQ 109.95 Chan 36 (Y) | APP CRS 318° | Rwy Idg TDZE Apt Elev 6121 713 727 |
|--|------------------------|--|

ILS or LOC RWY 32 BUFFALO NIAGARA INTL (BUF)

| | | | | | |
|-------------------------|--|--|--|---|-------------------------------|
| DME required. | | MALSR | | MISSED APPROACH: Climb to 1200 then climbing left turn to 3000 on heading 245° and on BUF VOR/DME R-267 to DAVVK INT/BUF 23.1 DME and hold. | |
| D-ATIS 135.35 | | BUFFALO APP CON 126.15 263.125 | | BUFFALO TOWER 120.5 257.8 | GND CON 133.2 257.8 |
| | | | | CLNC DEL 124.7 257.8 | CPDLC |



| | | |
|---|-------------------|---|
| ELEV 727 | D | TDZE 713 |
| REIL Rwy 14 TDZ/CL Rwy 5 and 23 HIRL Rwy 5-23 and 14-32 | | 318° 4.8 NM from FAF |
| 1200 | 3000 | DAVVK |
| ↑ | hdg 245° | BUF R-267 |
| * LOC only. | * I-BNQ I-BNQ 2.3 | WUDUB I-BNQ 3.7 |
| 1.2 | 2.3 | 3.7 |
| 1.1 NM | 1.4 NM | 2.3 NM |
| 5.9 NM | 2300 | 318° |
| 1540* | 2300 | 318° |
| 138° | 5000 | 3500 |
| GS 3.00° | TCH 54 | Use I-BNQ DME when on the localizer course. |
| CATEGORY | A | B |
| S-ILS 32 | 935-1/2 | 222 (300-1/2) |
| S-LOC 32 | 1120-1/2 | 407 (400-1/2) |
| CIRCLING | 1200-1 | 473 (500-1) |
| | 1220-1 1/2 | 493 (500-1 1/2) |
| | 1340-2 | 613 (700-2) |