

WAAS CH 69415 W01A	APP CRS 013°	Rwy Idg 8000 TDZE 63 Apt Elev 75
--	------------------------	---

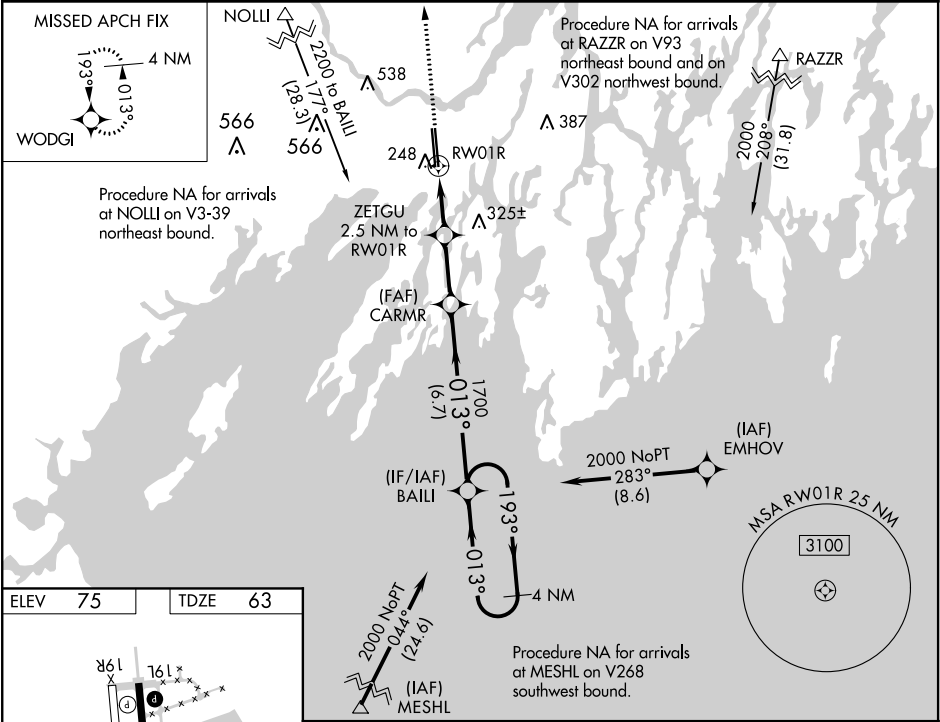
RNAV (GPS) RWY 1R
BRUNSWICK EXECUTIVE (BXM)

⚠ Baro-VNAV NA when using Portland altimeter setting. For uncompensated Baro-VNAV systems, LNAV/VNAV NA below -15°C (5°F) or above 54°C (130°F). DME/DME RNP-0.3 NA. VDP NA when using Portland altimeter setting. When local altimeter setting not received, use Portland altimeter setting and increase LPV DA to 314, LNAV/VNAV DA to 461 and all LNAV/VNAV visibilities ¼ SM; increase all MDA 60 feet and LNAV Cat C/D visibilities ¼ SM and Circling Cat C/D visibilities ¼ SM. For inop ALS when using Portland altimeter setting, increase LNAV Cat C/D visibility to 1 ⅜ SM.

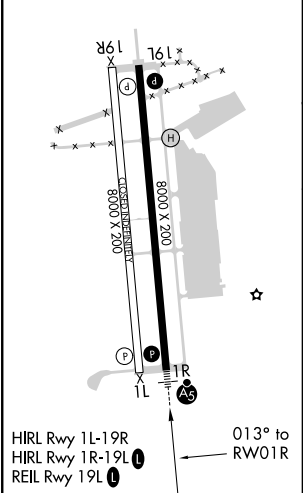
MALSR

MISSED APPROACH:
Climb to 2500 direct WODGI and hold.

AWOS-AV 134.875	PORTLAND APP CON ★ (112°-292°) 119.75 269.35 (293°-111°) 120.4 299.2	UNICOM 122.725 (CTAF) 0
---------------------------	---	--



ELEV 75	TDZE 63
----------------	----------------



2500	WODGI	ZETGU 2.5 NM to RWY 1R	CARMR	BAILI	4 NM Holding Pattern
*LNAV only.					
RWY 1R *1.2 NM to RWY 1R					
*900					
1700					
1700					
GP 3.00° TCH 50					
-1.2 NM - 1.3 NM - 2.5 NM - 6.7 NM					
CATEGORY	A	B	C	D	
LPV DA	263-½		200 (200-½)		
LNAV/VNAV DA	410-⅝		347 (400-⅝)		
LNAV MDA	500-½ 437 (500-½)		500-¾ 437 (500-¾)		
CIRCLING	560-1 485 (500-1)		840-2¼ 765 (800-2¼) 840-2½ 765 (800-2½)		

NE-1, 03 DEC 2020 to 31 DEC 2020

NE-1, 03 DEC 2020 to 31 DEC 2020