

WAAS CH 42536 W32A	APP CRS 323°	Rwy Idg 9501 TDZE 116 Apt Elev 130
--	------------------------	---

RNAV (GPS) RWY 32

CAPE COD COAST GUARD AIR STATION (FMH)

A

For uncompensated Baro-VNAV systems, LNAV/VNAV NA below -15°C (5°F) or above 54°C (130°F). DME/DME RNP-0.3 NA. Circling NA NE of Rwy 14 and NW of Rwy 23.

MISSED APPROACH: Climb to 600 then climbing left turn to 3000 direct GLESO and hold, continue climb-in-hold to 3000.

ATIS 120.475 236.825	BOSTON APP CON ★ 118.2 284.6	COAST GUARD TOWER 128.425 291.1	GND CON 124.15 275.8
-------------------------	---------------------------------	------------------------------------	-------------------------

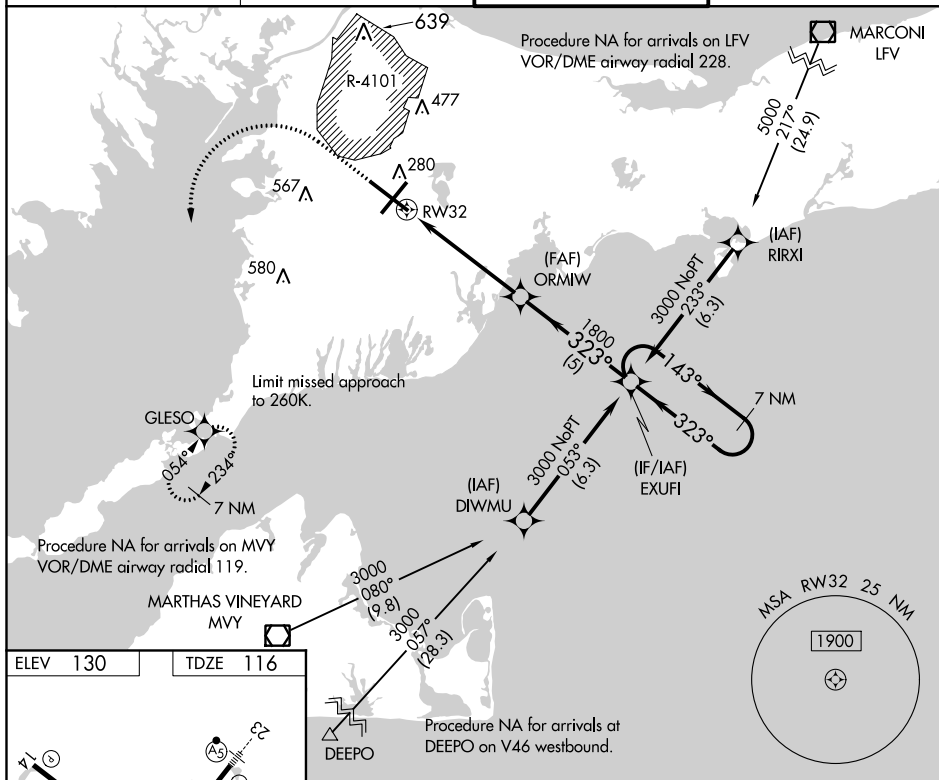


Diagram illustrating the RW32 instrument approach procedure. Key features include:

- Approach direction: 323° to RW32.
- Obstacle: 1800' ORMIW.
- Transition: 143°/323°.
- GP 3.00° TCH 50.
- 7 NM Holding Pattern at EXUFI.
- Approach segments: 1.1 NM, 4 NM, 5 NM.
- Runway dimensions: 8000 x 150, 2001 x 150.
- TWR 214.
- Star symbol 269.
- Legend: 600, 3000, GLESO.
- Note: *LNAV only.