

WAAS CH <b>86736</b> <b>W14A</b>	APP CRS <b>142°</b>	Rwy Idg <b>9501</b> TDZE <b>130</b> Apt Elev <b>130</b>
--	------------------------	---

RNAV (GPS) RWY 14

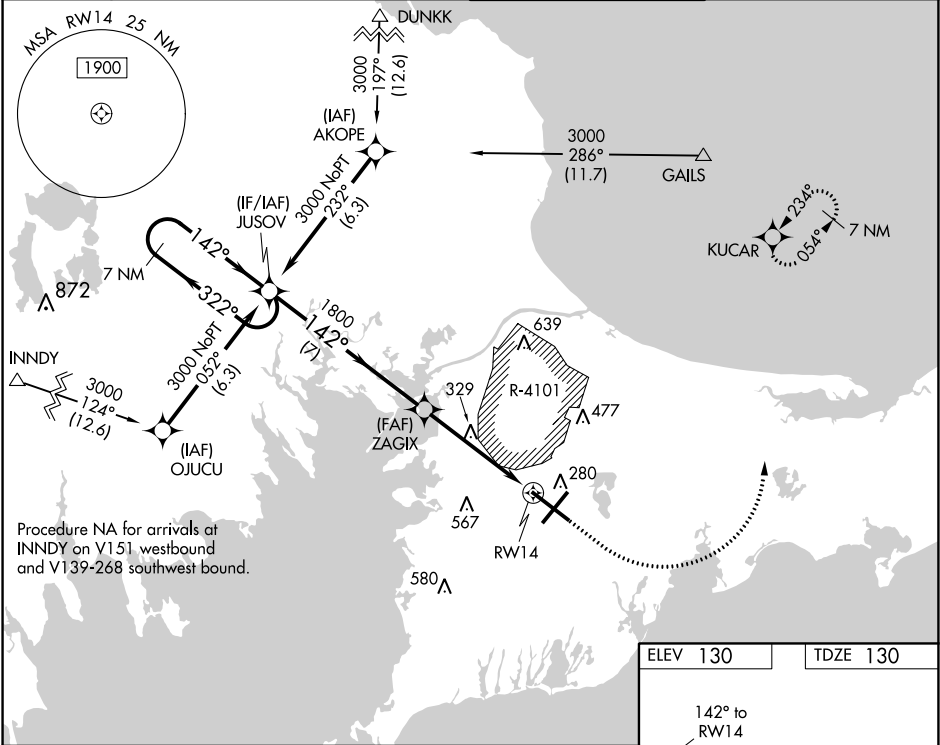
CAPE COD COAST GUARD AIR STATION (FMH)

⚠

For uncompensated Baro-VNAV systems, LNAV/VNAV NA below -15°C (5°F) or above 54°C (130°F). DME/DME RNP-0.3 NA. Circling NA NE of Rwy 14 and NW of Rwy 23. Helicopter visibility reduction below ¾ SM NA.

MISSED APPROACH: Climb to 600 then climbing left turn to 3000 direct KUCAR and hold.

ATIS <b>120.475 236.825</b>	BOSTON APP CON ★ <b>118.2 284.6</b>	COAST GUARD TOWER <b>128.425 291.1</b>	GND CON <b>124.15 275.8</b>
--------------------------------	--	---	--------------------------------



VGSI and RNAV glidepath not coincident (VGSI Angle 3.00/TCH 47).			
7 NM Holding Pattern			
GP 3.10° TCH 53			
* LNAV only.			
* 1.2 NM to RW14			
7 NM 3.7 NM 1.2 NM			
CATEGORY	A	B	C
LPV DA		330-¾	200 (200-¾)
LNAV/VNAV DA		563-1⅜	433 (500-1⅜)
LNAV MDA	580-1	450 (500-1)	580-1⅜ 450 (500-1⅜)
CIRCLING	580-1 450 (500-1)	640-1 510 (600-1)	900-2¼ 770 (800-2¼) 900-2½ 770 (800-2½)

