

WAAS CH 77740 W15A	APP CRS 148°	Rwy Idg TDZE Apt Elev	4000 270 270
--	------------------------	-----------------------------	---

RNAV (GPS) RWY 15

CENTRAL MAINE ARPT OF NORRIDGEWOCK (OWK)

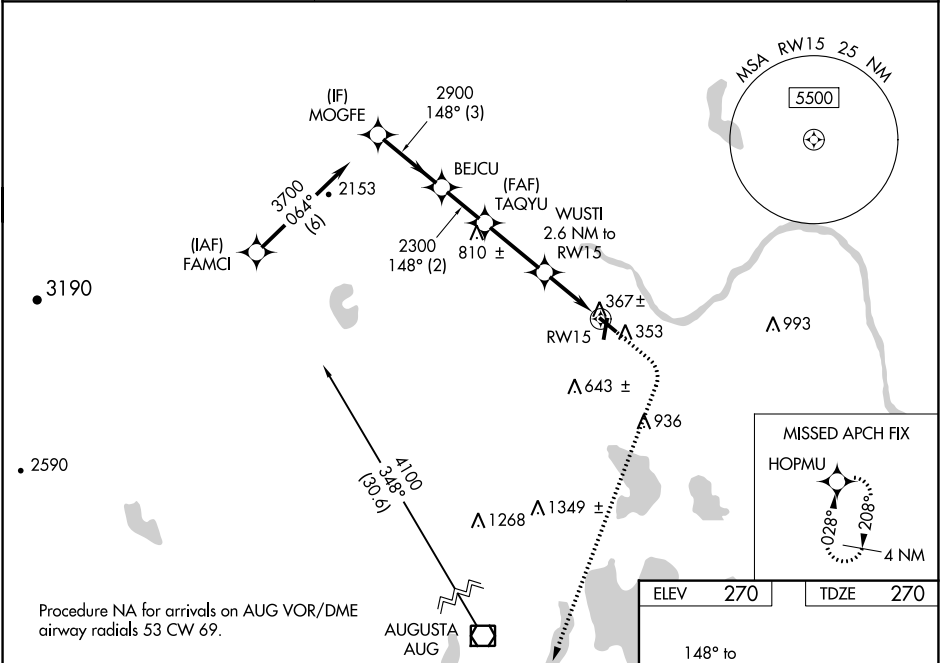
▼

▲ NA

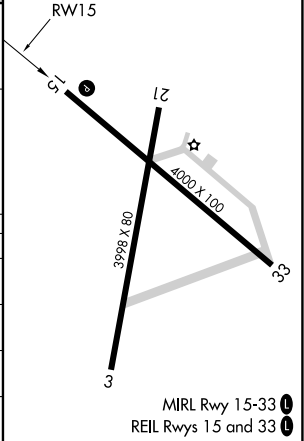
For uncompensated Baro-VNAV systems, LNAV/VNAV NA below -15°C (5°F) or above 54°C (130°F). Baro-VNAV and VDP NA when using Augusta State altimeter setting. Rwy 15 helicopter visibility reduction below ¾ SM NA. DME/DME RNP-0.3 NA. When local altimeter setting not received, use Augusta State altimeter setting; increase LPV DA to 607 feet, LNAV/VNAV DA 659 feet and LNAV/VNAV visibility all Cats ½ SM. Increase all MDA 80 feet and LNAV Cat C visibility ¼ SM and Circling Cat C visibility ½ SM. Circling Rwy 3, 21, 33 NA at night.

MISSED APPROACH:
Climb to 800 then climbing right turn to 2900 direct HOPMU and hold.

AWOS-AV 122.8	PORTLAND APP CON ★ 128.35 299.2	UNICOM 122.8 (CTAF) 0
-------------------------	---	---------------------------------



MOGFE		VGSI and descent angles not coincident (VGSI Angle 3.00/TCH 43).		800	2900	HOPMU
3700		148°				
GP 3.50° TCH 40		2900				
3 NM		2 NM		2.8 NM		
CATEGORY		A		B		D
LPV DA		540-1		270 (300-1)		NA
LNAV/VNAV DA		592-1		322 (400-1)		NA
LNAV MDA		680-1		410 (500-1)		NA
CIRCLING		800-1		960-1		NA
		530 (600-1)		690 (700-1)		
				1080-2 ¼		
				810 (900-2 ¼)		



NE-1, 03 DEC 2020 to 31 DEC 2020

NE-1, 03 DEC 2020 to 31 DEC 2020