

APP CRS  
**354°**

Rwy Idg  
TDZE  
Apt Elev  
**2722**  
**416**  
**416**

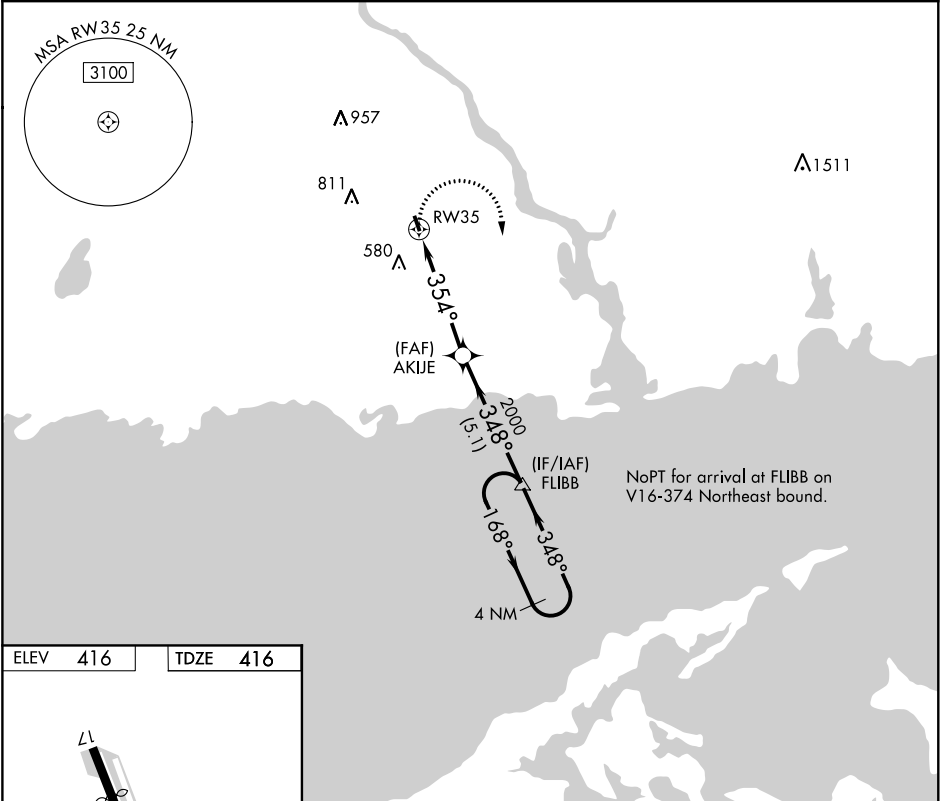
RNAV (GPS) RWY 35  
CHESTER (SNC)

▼

DME/DME RNP-0.3 NA. Procedure NA at night. Helicopter visibility reduction below 1 SM NA. When local altimeter setting not received, use Meriden altimeter setting and increase all MDA 100 feet.

MISSED APPROACH: Climbing right turn to 2100 direct FLIBB and hold.

AWOS-3 <b>118.325</b>	NEW YORK APP CON <b>124.075 343.65</b>	UNICOM <b>122.725</b> (CTAF)
--------------------------	---	---------------------------------



ELEV 416

TDZE 416

2100

FLIBB

AKIJE

FLIBB

2100

4 NM Holding Pattern

168°

348°

354°

348°

2000

4.8 NM

5.1 NM

CATEGORY	A	B	C	D
LNAV MDA	820-1	404 (500-1)	NA	
CIRCLING	920-1	504 (600-1)	NA	