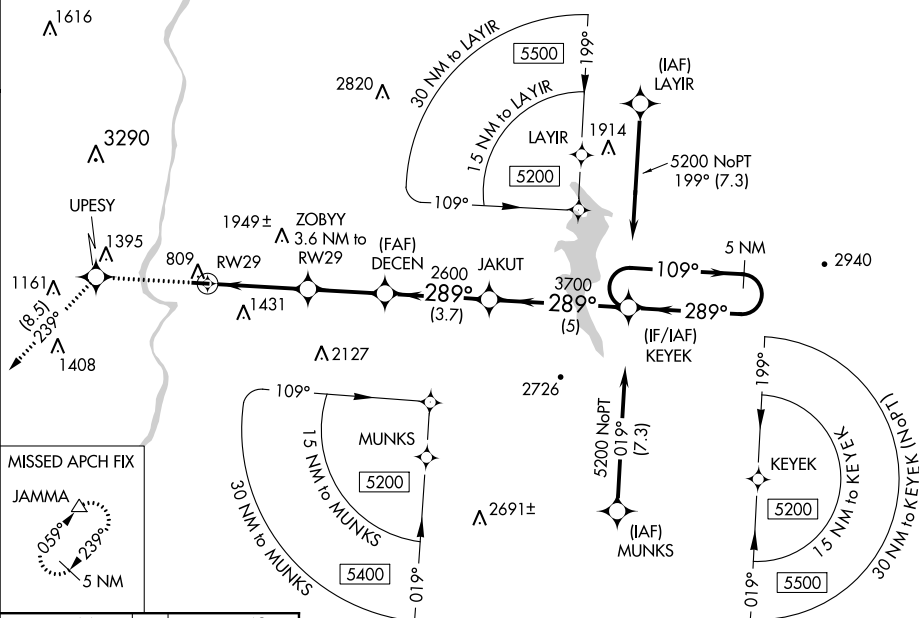


RNAV (GPS) RWY 29

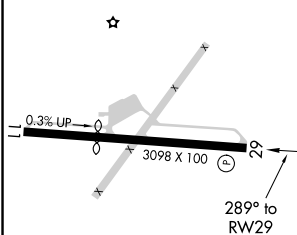
MISSED APPROACH: Climb to 5400 direct UPESY and on track 239° to JAMMA and hold, continue climb-in-hold to 5400.

UNICOM

2.7 (CTAF) **L**



TDZE 543



REIL Rwy 29 **L**
MIRL Rwy 11-29 **L**

Visual Segment - Obstacles.

The diagram illustrates a flight path with the following features:

- Obstacles:** 5400 (upward arrow), UPESY (star symbol), JAMMA (triangle symbol).
- Altitude:** tr 239°
- Obstacles:** ZOBYY (3.6 NM to RW29), DECEN (marked with an 'X'), JAKUT, KEYEK.
- Altitudes:** 1720, 2600, 3700, 5200.
- Distances:** 3.6 NM, 2.8 NM, 3.7 NM, 5 NM.
- Holding Pattern:** 5 NM Holding Pattern at KEYEK.
- Angles:** 289°, 109°, 289°.
- Waypoint:** RW29.

NE-1, 03 DEC 2020 to 31 DEC 2020