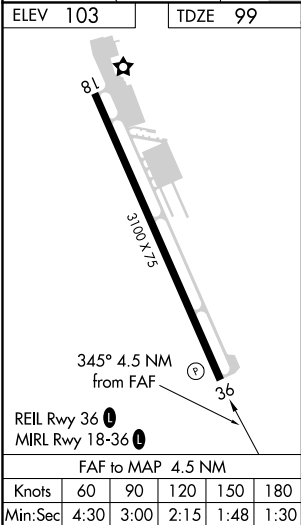
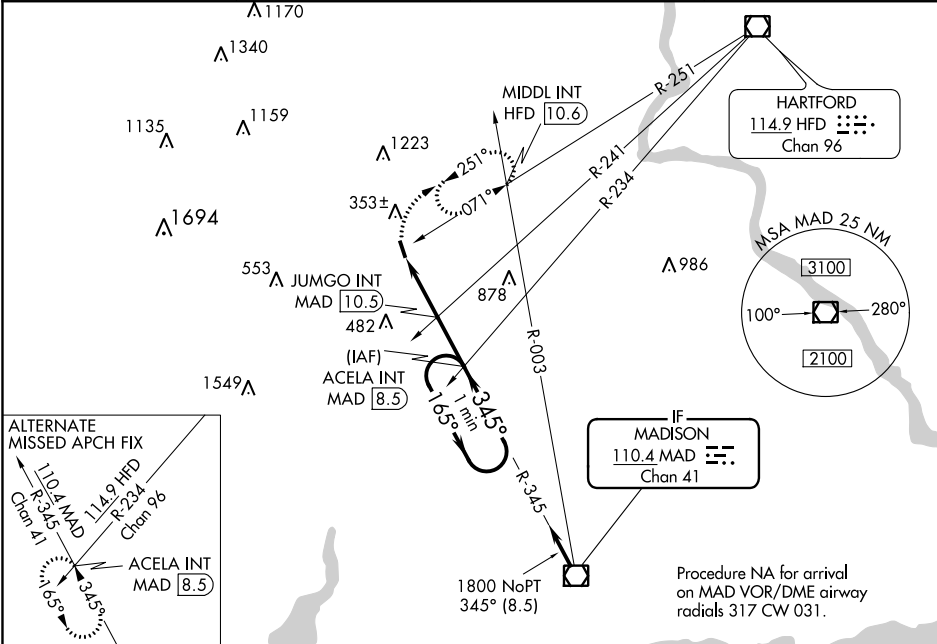


VOR/DME MAD	APP CRS	Rwy Idg	3100
110.4	345°	TDZE	99
Chan 41		Apt Elev	103

VOR RWY 36
MERIDEN MARKHAM MUNI (MMK)

<p>▼ Rwy 36 helicopter visibility reduction below 1 SM NA. Procedure NA at night.</p> <p>▲ MISSED APPROACH: Climbing right turn to 2700 on HFD VOR/DME R-251 to MIDDLE INT/HFD 10.6 DME and hold, continue climb-in-hold to 2700.</p>

ASOS 134.925	YANKEE APP CON 127.8 269.325	CLNC DEL 120.65	UNICOM 123.05 (CTAF) 0
-----------------	---------------------------------	--------------------	---------------------------



<div>2700</div> <div>HFD R-251</div>		<div>MIDDL INT</div>		<div>ACELA INT</div> <div>MAD 8.5</div> <div>One Minute Holding Pattern</div>	
		<div>JUMGO INT</div> <div>MAD 10.5</div>		<div>165°</div> <div>2100</div> <div>345°</div>	
		<div>1060</div> <div>3.50°</div> <div>TCH 38</div>		<div>1800</div>	
		<div>2.5 NM</div>		<div>2 NM</div>	
CATEGORY	A	B	C	D	
S-36	1060-1¼ 961 (1000-1¼)	1060-1½ 961 (1000-1½)	NA		
CIRCLING	1060-1¼ 957 (1000-1¼)	1060-1½ 957 (1000-1½)	NA		
JUMGO FIX MINIMUMS (DUAL VOR RECEIVERS OR DME REQUIRED)					
S-36	880-1 781 (800-1)	880-1¼ 781 (800-1¼)	NA		
CIRCLING	880-1 777 (800-1)	920-1¼ 817 (900-1¼)	NA		

NE-1, 03 DEC 2020 to 31 DEC 2020

NE-1, 03 DEC 2020 to 31 DEC 2020