

WAAS CH 86738 W07A	APP CRS 075°	Rwy Idg TDZE Apt Elev 3502 8 8
--	------------------------	--

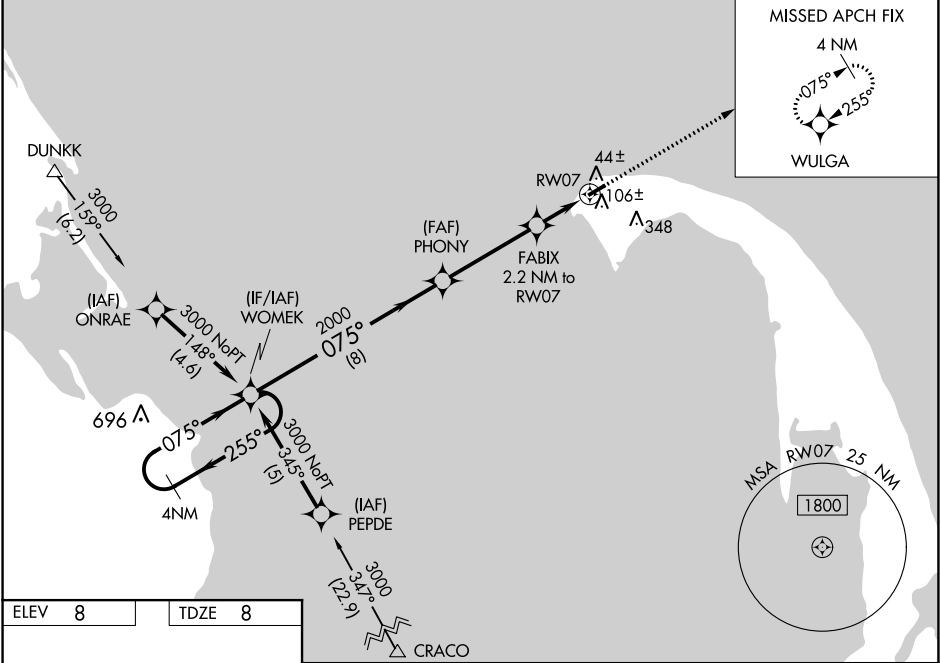
RNAV (GPS) RWY 7
PROVINCETOWN MUNI (PVC)

For uncompensated Baro-VNAV systems, LNAV/VNAV NA below -15°C (5°F) or above 54°C (130°F). DME/DME RNP-0.3 NA. Inop table does not apply to LPV Cats A and B. When local altimeter setting not received, use Hyannis altimeter setting: increase LPV DA to 271, increase LNAV/VNAV DA to 331, and Cat A/B visibility 1/8 mile and all MDA 80 feet. For inop MALSF when using Hyannis altimeter setting, increase LPV Cat A/B visibility to 7/8 mile. Baro-VNAV and VDP NA when using Hyannis altimeter setting.

MALSF

MISSED APPROACH:
Climb to 3000 direct
WULGA and hold.

AWOS-3PT 119.275	BOSTON APP CON ★ 118.2	CLNC DEL 120.65	UNICOM 122.8 (CTAF)	122.85 0
----------------------------	----------------------------------	---------------------------	-------------------------------	-----------------



ELEV 8 TDZE 8

REIL Rwy 25
HIRL Rwy 7-25 0

3502 x 100
57
075° to RW07

4 NM Holding Pattern		WOMEK		PHONY		FABIX 2.2 NM to RW07		RW07	
3000		255°		075°		2000		*740	
GP 3.00°		TCH 40		8 NM		3.9 NM		1.2 NM	
CATEGORY		A		B		C		D	
LPV DA		208-3/4		200 (200-3/4)		NA		NA	
LNAV/VNAV DA		268-3/4		260 (300-3/4)		NA		NA	
LNAV MDA		360-3/4		352 (400-3/4)		NA		NA	
CIRCLING		460-1 452 (500-1)		660-1 652 (700-1)		NA		NA	

NE-1, 03 DEC 2020 to 31 DEC 2020

NE-1, 03 DEC 2020 to 31 DEC 2020