

## LOC RWY 5

NORTH CENTRAL STATE (SFZ)

LOC/DME I-SFZ <b>111.9</b> Chn <b>56</b>	APP CRS <b>047°</b>	Rwy Idg <b>5000</b> TDZE <b>429</b> Apt Elev <b>441</b>
--	------------------------	---

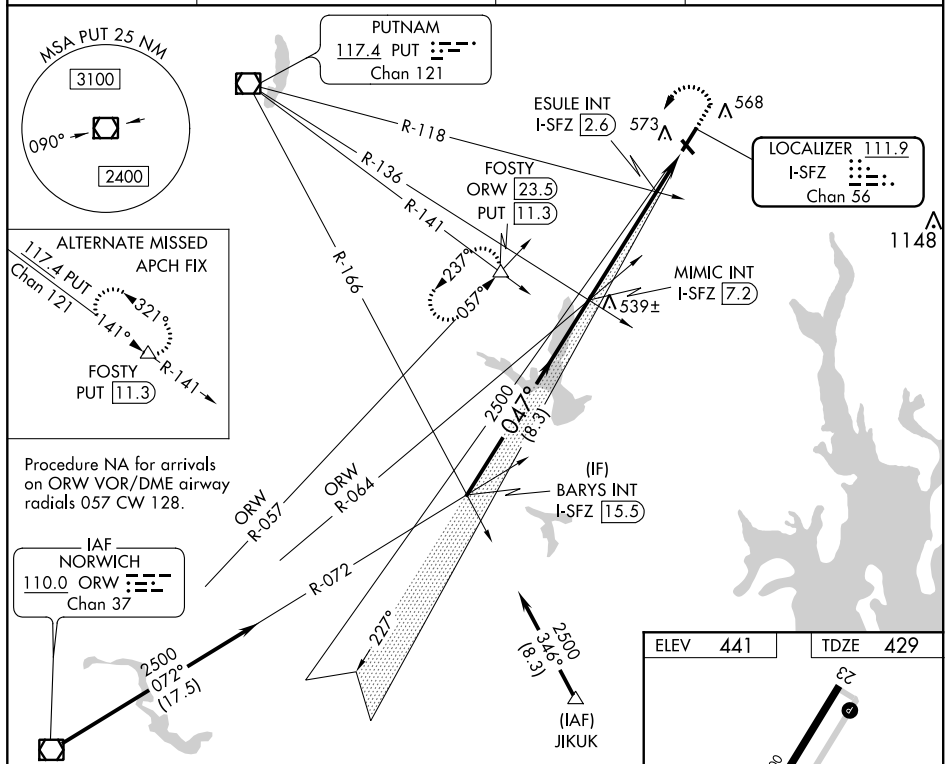
**NA** Circling Rwy 15, 33 NA at night. VDP NA with Providence altimeter setting. When local altimeter setting not received, use Providence altimeter setting and increase all MDA 100 feet; increase S-5 Cat C and Circling Cat C visibility  $\frac{1}{4}$  mile, and ESULE fix minimums S-5 Cat C visibility  $\frac{1}{4}$  mile.

MALS



**MISSED APPROACH:** Climb to 1000 then climbing left turn to 2500 on ORW VOR/DME R-057 to FOSTY INT/ ORW 23.5 DME and hold.

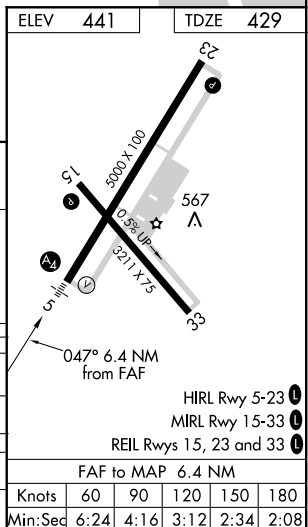
AWOS-3PT <b>120.775</b>	PROVIDENCE APP CON ★ <b>123.675 244.875</b>	CLNC DEL <b>124.35</b>	UNICOM <b>123.075 (CTAF) 0</b>
----------------------------	--	---------------------------	-----------------------------------



Procedure NA for arrivals  
on ORW VOR/DME airway  
radials 057 CW 128.

IAF  
NORWICH  
110.0 ORW :≡≡≡  
Chan 37

BARYS INT I-SFZ 15.5      MIMIC INT I-SFZ 7.2      1000      2500      ORW R-057      FOSTY  $\triangle$   
2500 — 047° — 2500 \* 3.00° TCH 52      ESULE INT I-SFZ 2.6      I-SFZ 1.9      I-SFZ 0.8  
 \*1140 when using Providence altimeter setting.      \*1040

PAWTUCKET, RHODE ISLAND  
Amdt 7C 16JUL20

41°55'N-71°29'W

NORTH CENTRAL STATE (SFZ)

LOC RWY 5

NE-1, 03 DEC 2020 to 31 DEC 2020