

LOC I-RLS 108.9 Chan 26	APP CRS 068°	Rwy Idg TDZE 76 Apt Elev 81	4010
--------------------------------------	------------------------	---	-------------

LOC RWY 7
WESTERLY STATE (WST)

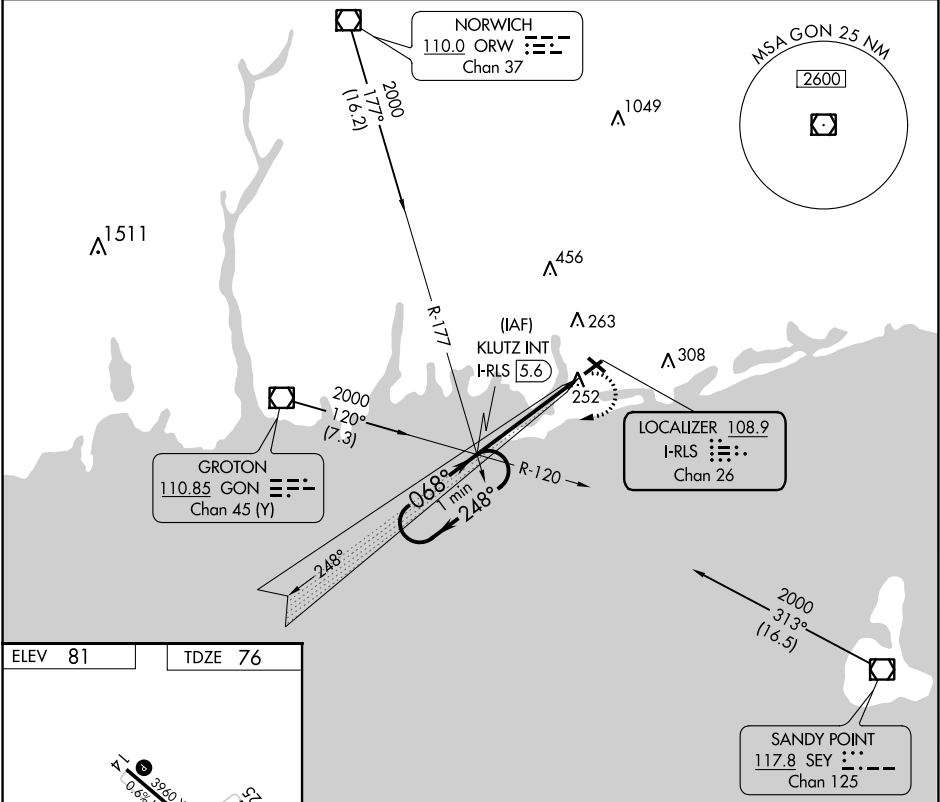
NA

Inoperative table does not apply.
Rwy 7 Straight-in and Circling and
Circling Rwy 14 and 32 NA at night.

MALSF

MISSED APPROACH: Climbing right turn to 2000 via
I-RLS SW course to KLUTZ INT/I-RLS 5.6 DME and hold.

ASOS 132.375	PROVIDENCE APP CON ★ 119.45 319.2	UNICOM 123.0 (CTAF) 0
------------------------	---	---------------------------------



ELEV 81 TDZE 76

REIL Rws 14, 25 and 32

MIRL Rws 7-25 and 14-32

FAF to MAP 4.9 NM

Knots	60	90	120	150	180
Min:Sec	4:54	3:16	2:27	1:58	1:38

One Minute Holding Pattern

2000	I-RLS SW crs	KLUTZ INT
------	--------------	-----------

KLUTZ INT I-RLS 5.6	I-RLS 0.7
---------------------	-----------

CATEGORY	A	B	C	D
S-7	500-1 424 (500-1)		500-1¼ 424 (500-1¼)	
CIRCLING	580-1 499 (500-1)		580-1½ 499 (500-1½)	720-2 639 (700-2)

NE-1, 03 DEC 2020 to 31 DEC 2020

NE-1, 03 DEC 2020 to 31 DEC 2020