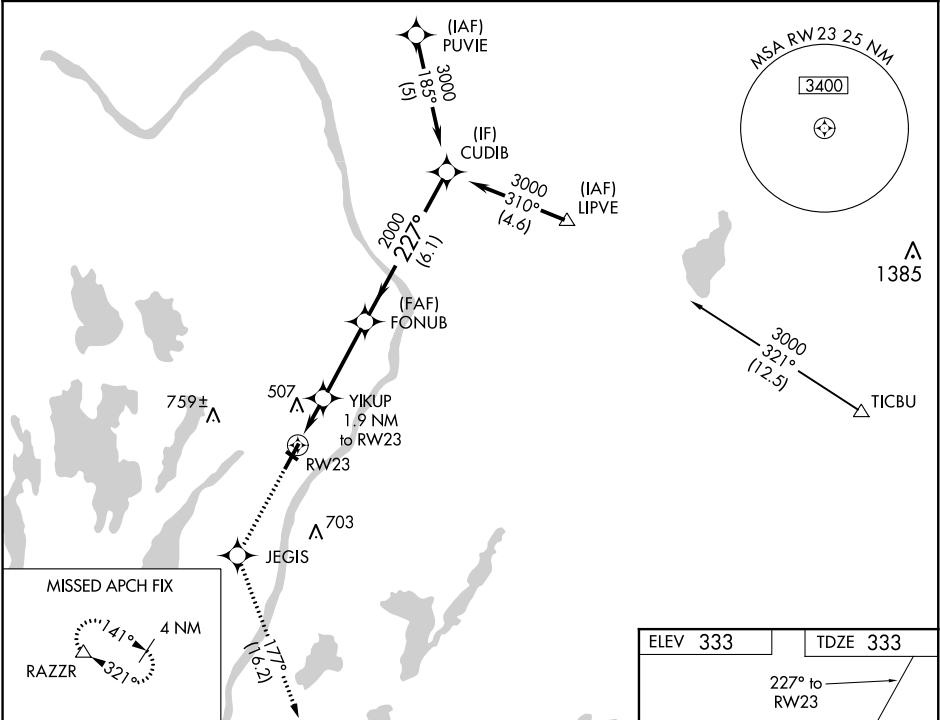


WAAS CH 63100 W23A	APP CRS 227°	Rwy Idg TDZE 333 Apt Elev 333
--	------------------------	---

RNAV (GPS) RWY 23
WATERVILLE ROBERT LAFLEUR (WVL)

<p>V Circling to Rwy 14 and 32 NA at night. DME/DME RNP-0.3 NA. When local altimeter setting not received, use Augusta altimeter setting and increase LPV DA to 618 feet and all MDA 40 feet; increase LPV all Cats and LNAV Cat C visibility ¼ mile. VDP NA when using Augusta altimeter setting.</p> <p>W</p>	<p>MISSED APPROACH: Climb to 3000 direct JEGIS and via 177° track to RAZZR and hold.</p>
---	--

AWOS-3PT 118.375	PORTLAND APP CON ★ 128.35 299.2	CLNC DEL 124.6 299.2	UNICOM 122.7 (CTAF) 0
----------------------------	---	--------------------------------	--



3000 ↑	JEGIS ✦	tr 177°	RAZZR △						
*LNAV only.				YIKUP 1.9 NM to RW23					
RW23				FONUB					
*1.4 NM to RW23				*980					
				VGSi and RNAV glidepath not coincident (VGSi Angle 3.00/TCH 40).					
				CUDIB 3000					
				Procedure Turn NA					
				GP 3.00° TCH 45					
CATEGORY		A		B		C		D	
LPV	DA	583-¾ 250 (300-¾)							
LNAV/VNAV	DA	NA							
LNAV MDA		800-1	467 (500-1)		800-1¼ 467 (500-1¼)		800-1½ 467 (500-1½)		
CIRCLING		860-1	527 (600-1)		860-1½ 527 (600-1½)		900-2 567 (600-2)		

