

ILS or LOC/DME RWY 5
WATERVILLE ROBERT LAFLEUR (WVL)

MISSED APPROACH: Climb to 1200 then climbing right turn to 3000 direct AUG VOR/DME and hold.

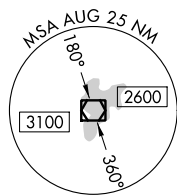
UNICOM
122.7 (CTAF) 

Diagram illustrating the intersection of HIRL Rwy 5-23 and REIL Rwy 23. The diagram shows two intersecting runways forming an 'X' shape. The main runway is labeled 5-23 and the intersecting runway is labeled 1-4. Key dimensions and angles are provided:

- Runway 5-23 length: 5300 X 100
- Runway 1-4 length: 2301 X 80
- Intersection angle: 0.4° UP
- Runway 5-23 angle: 1.2° UP
- Runway 1-4 angle: 0.47° 5 NM from FAF
- Star symbol (☆) is located near the intersection.
- Runway numbers 14, 23, 32, and 4 are marked at the ends of the runways.

CATEGORY	A	B	C	D
S-ILS 5		509- ³ / ₄	200 (200- ³ / ₄)	
S-LOC 5		680- ³ / ₄	371 (400- ³ / ₄)	
CIRCLING	860-1	527 (600-1)	860-1½ 527 (600-1½)	900-2 567 (600-2)