

WAAS CH <b>48940</b>	APP CRS <b>129°</b>	Rwy Idg TDZE <b>54</b>
<b>W13A</b>		Apt Elev <b>55</b>

RNAV (GPS) RWY 13

KNOX COUNTY RGNL (RKD)

▼

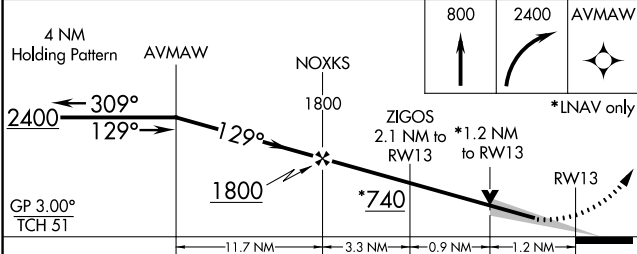
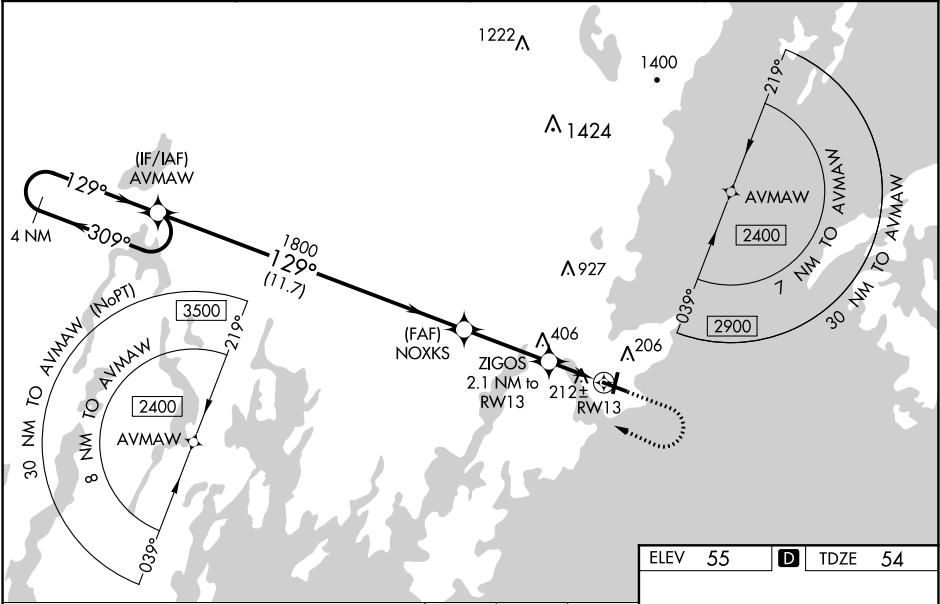
▲

DME/DME RNP -0.3 NA. VDP and Baro-VNAV NA when using Wiscasset altimeter setting. When local altimeter setting not received, use Wiscasset altimeter setting and increase LPV DA to 319 feet, LNAV/VNAV DA to 467 feet and all MDA 80 feet. Increase LNAV/VNAV visibility all Cats to 1 SM, LNAV Cat C/D to 1 SM and Circling Cat C to 2 ¼ SM. For inop ALS increase LNAV/VNAV all Cats visibility to 1 ½ SM. For inop ALS when using Wiscasset altimeter setting increase LPV all Cats visibility to ¾ SM, LNAV/VNAV all Cats visibility to 1 ¾ SM and LNAV Cat C/D to 1 ¾ SM. For uncompensated Baro-VNAV systems, LNAV/VNAV NA below -15°C (5°F) or above 54°C (130°F).

MALSR

MISSED APPROACH:  
Climb to 800 then  
climbing right turn to  
2400 direct AVMAW  
and hold.

AWOS-3PT <b>119.025</b>	PORTLAND APP CON★ <b>120.4 299.2</b>	CLNC DEL <b>123.8</b>	UNICOM <b>123.05 (CTAF) 0</b>
----------------------------	---	--------------------------	----------------------------------



CATEGORY	A	B	C	D
LPV DA		254-½ 200 (200-½)		
LNAV/VNAV DA		402-¾ 348 (400-¾)		
LNAV MDA	480-½ 426 (500-½)		480-¾ 426 (500-¾)	
CIRCLING	580-1 525 (600-1)		720-1¾ 665 (700-1¾)	1140-3 1085 (1100-3)

