


WAAS CH 86921 W07A	APP CRS 075°	Rwy Idg TDZE 241 Apt Elev 244
--	------------------------	---

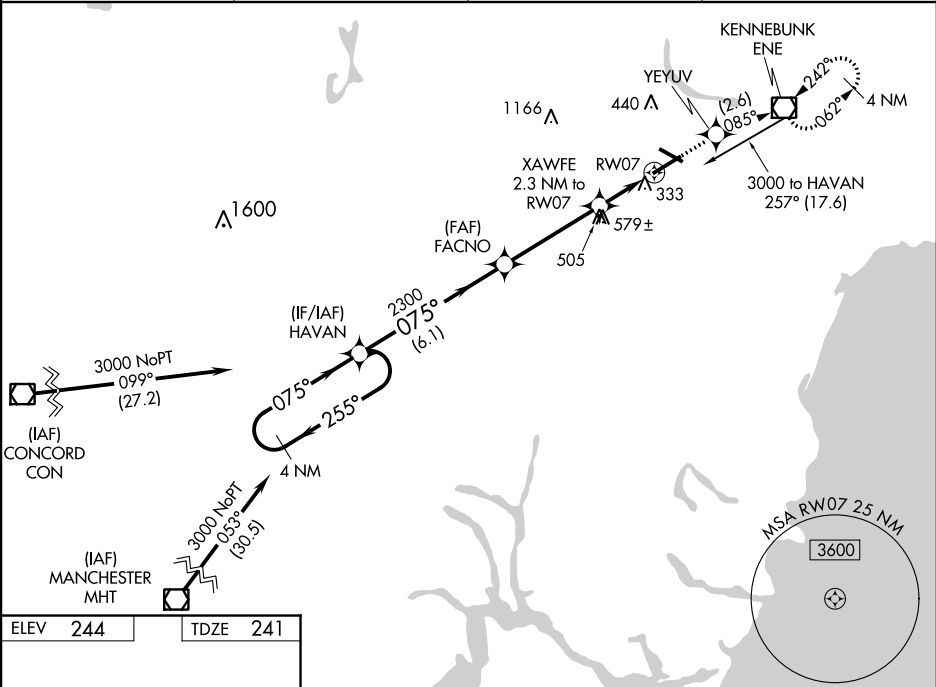
RNAV (GPS) RWY 7

SANFORD SEACOAST RGNL (SFM)

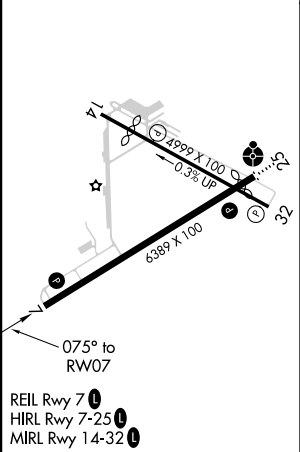
▼ For uncompensated Baro-VNAV systems, LNAV/VNAV NA below -15°C (5°F) or above 54°C (130°F). Helicopter visibility reduction below ¾ SM NA. DME/DME RNP-0.3 NA. Baro-VNAV and VDP NA when using Rochester, NH altimeter setting. When local altimeter setting not received, use Rochester, NH altimeter setting: increase LPV DA to 479; increase LNAV/VNAV DA to 699 and visibility all Cats ¼ SM, increase all MDA 40 feet, and Circling Cat C visibility ¼ SM.

▲ MISSED APPROACH: Climb to 3000 direct YEYUV and on track 085° to ENE VOR/DME and hold, continue climb-in-hold to 3000.

AWOS-3PT 120.025	PORTLAND APP CON* 119.75 269.35	CLNC DEL 121.725	UNICOM 123.075 (CTAF) 
----------------------------	---	----------------------------	---



ELEV 244	TDZE 241
-----------------	-----------------



4 NM Holding Pattern		3000 ↑		YEYUV ✧		tr 085°		ENE ◻	
3000 ← 255° GP 3.00° TCH 57		HAVAN		FACNO		XAWFE 2.3 NM to RW07		*INAV only 1.7 NM to RW07	
075° →		075°		2300		*1020		RW07	
VGSi and RNAV glidepath not coincident (VGSi Angle 3.00/TCH 53).		2300		6.1 NM		4 NM		0.6 NM	
								1.7	
CATEGORY	A	B	C	D					
LPV DA	441-¾		200 (200-¾)						
LNAV/ VNAV DA	650-1 ⅓		409 (500-1 ⅓)						
LNAV MDA	840-1 599 (600-1)		840-1¾ 599 (600-1¾)						
CIRCLING	840-1 596 (600-1)		1180-2¾ 936 (1000-2¾)		1240-3 996 (1000-3)				