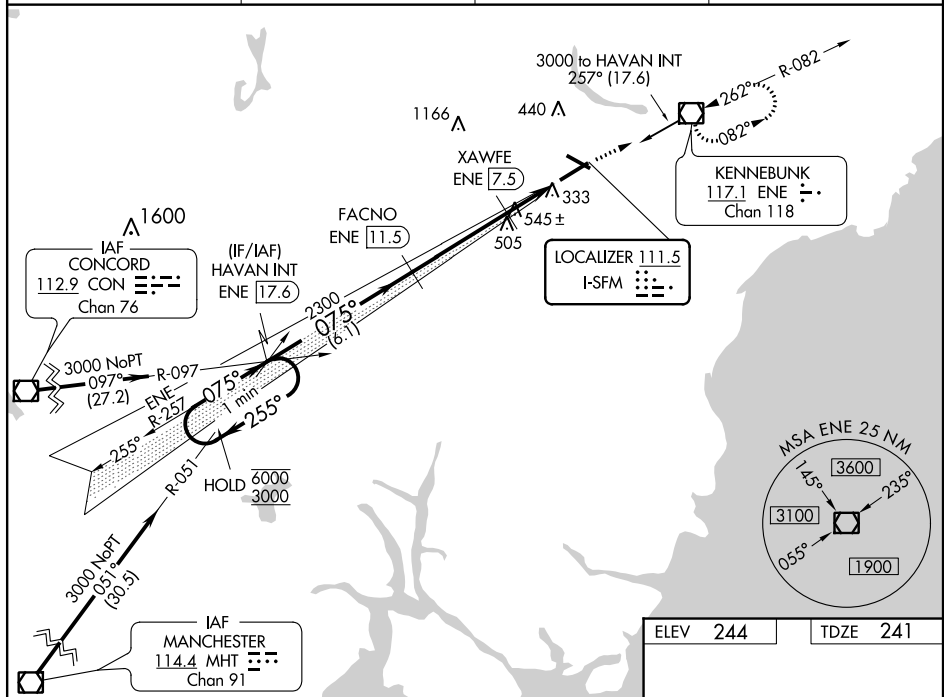


ILS or LOC RWY 7
SANFORD SEACOAST RGNL (SFM)

T Rwy 7 helicopter visibility reduction below $\frac{3}{4}$ SM NA.
A NA DME from ENE VOR/DME.
 Simultaneous reception of I-SFM and ENE DME required.

MISSED APPROACH: Climb to 2500 direct ENE VOR/DME and hold, continue climb-in-hold to 2500.

AWOS-3PT 120.025	PORTLAND APP CON ★ 119.75 269.35	CLNC DEL 121.725	UNICOM 123.075 (CTAF) 0
----------------------------	--	----------------------------	-----------------------------------



NE-1, 03 DEC 2020 to 31 DEC 2020

CATEGORY	A	B	C	D
S-ILS 7	441-3/4 200 (200-3/4)			
S-LOC 7	800-1	559 (600-1)	800-1 5/8	559 (600-1 5/8)
C CIRCLING	800-1	556 (600-1)	1180-2 3/4 936 (1000-2 3/4)	1240-3 996 (1000-3)

