

LOC/DME I-LCI <u>108.5</u> Chan 22	APP CRS 084°	Rwy Idg 5646 TDZE 545 Apt Elev 545
--	------------------------	---

ILS or LOC RWY 8

T
A

VDP NA when using Concord altimeter setting. If local altimeter setting not received, use Concord altimeter setting and increase all DA/MDA 80 feet. For inop MALSR increase S-ILS 8 all Cats visibility to 1 mile. Night landing Rwy 26 NA.

MALSR

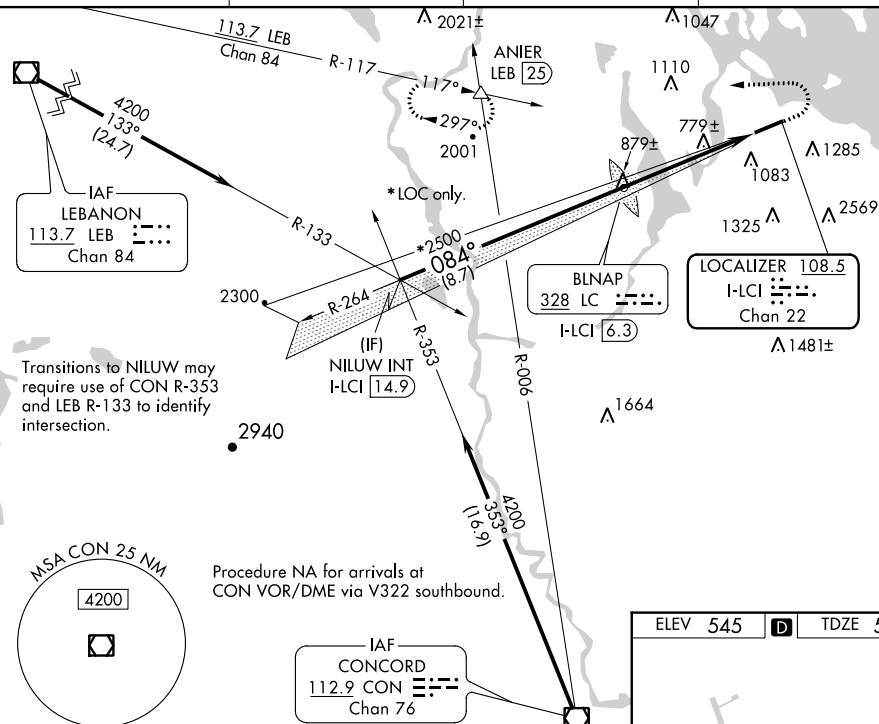


MISSED APPROACH: Climb to 1200 then climbing left turn to 5000 via heading 264° and LEB VOR/DME R-117 to ANIER INT/LEB 25 DME and hold, continue climb-in-hold to 5000.

AWOS-3PT
133.525

BOSTON APP CON	
134.75	254.25

CLNC DEL
119.85

UNICOM
123.0 (CTAF) **L**

NE-1, 03 DEC 2020 to 31 DEC 2020

VGS1 and ILS glidepath not coincident (VGS1 Angle 3.00°/TCH 44).

NILUW INT I-CL 14.9

BLNAP LOM I-CL 6.3

1200

5000

LEB R-117

ANIER

4200

084°

3100

2256

*2500

*I-CL 2.5

*LOC only.

GS 3.00° TCH 44

8.7 NM

3.8 NM

1.4 NM

CATEGORY	A	B	C	D
S-ILS 8	825-1/2 280 (300-1/2)			
S-LOC 8	1040-1/2	495 (500-1/2)	1040-3/4 495 (500-3/4)	1040-1 495 (500-1)
CIRCLING	1420-1 875 (900-1)	1600-1/2 1055 (1100-1/2)	2160-3 1615 (1700-3)	2860-3 2315 (2400-3)

