
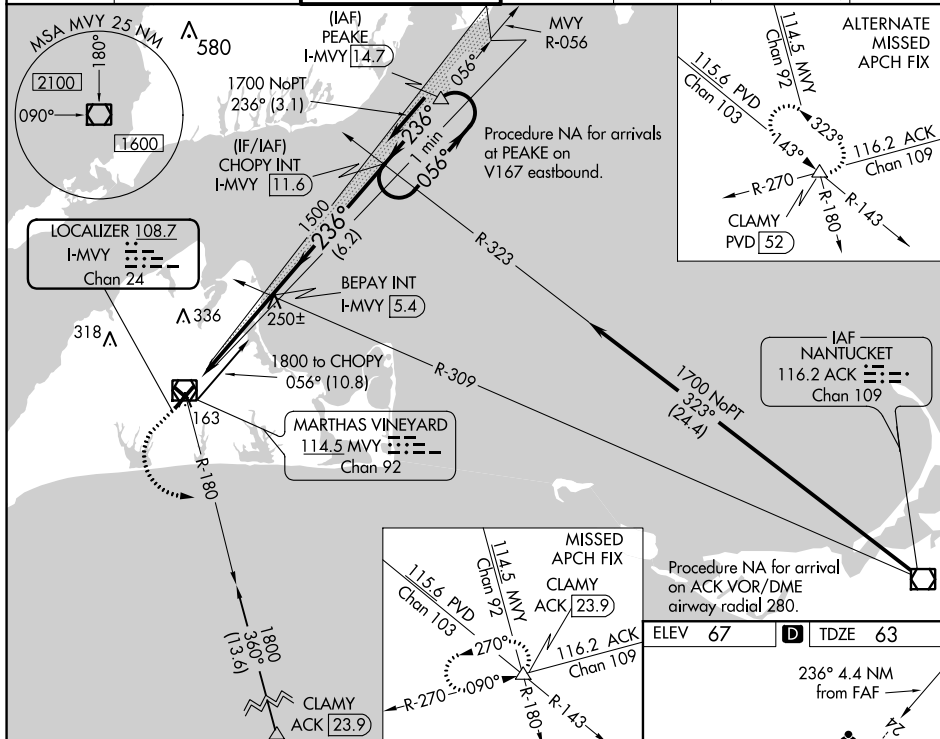


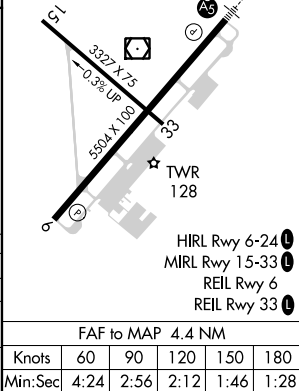
ILS or LOC RWY 24

- | | |
|--|---|
| <p>MALSR</p>  | <p>MISSED APPROACH:
 Climb to 800 then
 climbing left turn to 2500
 on MVY VOR/DME R-180
 to CLAMY INT/ACK 23.9
 DME and hold.</p> |
|--|---|

ATIS 126.25	BOSTON APP CON ★ 119.7	VINEYARD TOWER ★ 121.4 (CTAF) 0	GND CON 124.35	CLNC DEL 124.35	CLNC DEL 119.7 (When twr closed)	UNICOM 122.95
-----------------------	----------------------------------	--	--------------------------	---------------------------	---	-------------------------



		Use I-MVY DME when on the localizer course. BEPAY INT I-MVY <u>5.4</u> CHOPY INT I-MVY <u>11.6</u> One Minute Holding Pattern	
*LOC only I-MVY <u>1</u> *I-MVY <u>2.3</u> 1500 236° 056° 1700 236° GS 3.00° TCH 51		1.2 NM 3.2 NM 6.2 NM	
CATEGORY	A	B	C
S-ILS 24 **	263/24 200 (200-½)		
S-LOC 24	500/24	437 (500-½)	500/40 437 (500-¾)
C CIRCLING	500-1 433 (500-1)	540-1 473 (500-1)	700-1¾ 633 (700-1¾) 780-2¼ 713 (800-2¼)



NE-1, 03 DEC 2020 to 31 DEC 2020

NE-1, 03 DEC 2020 to 31 DEC 2020