

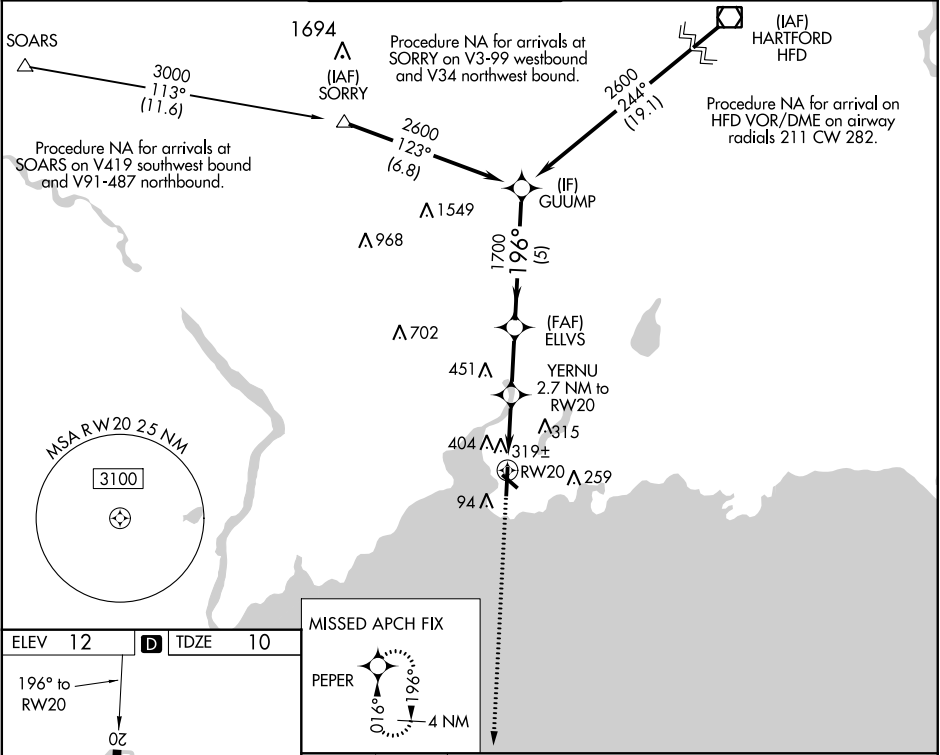
WAAS CH 45937 W20A	APP CRS 196°	Rwy Idg 5248 TDZE 10 Apt Elev 12
--	------------------------	---

RNAV (GPS) RWY 20
TWEED-NEW HAVEN (HVN)

⚠ DME/DME RNP-0.3 NA. When local altimeter setting not received, use Long Island Mac Arthur altimeter setting; increase all MDAs 100 feet and LNAV and Circling visibility Cat C and D ¼ mile. Night landing: Rwy 14, 32 NA. Helicopter visibility reduction below ¾ SM NA. VDP NA with Long Island Mac Arthur altimeter setting.

MISSED APPROACH: Climb to 1800 direct PEPER and hold.

ATIS 133.65	NEW YORK APP CON 124.075 343.65	TWEED-NEW HAVEN TOWER ★ 124.8 (CTAF) 0	GND CON 121.7	CLNC DEL 121.7 (when twr closed)	UNICOM 122.95
-----------------------	---	---	-------------------------	---	-------------------------



ELEV 12 **TDZE 10**

196° to RW20

TWR 86

5600 x 150

HIRL Rwy 2-20

MIRL Rwy 14-32

MISSED APCH FIX

PEPER

1800

PEPER

Visual Segment - Obstacles.

YERNU 2.7 NM to RW20

ELLVS

GUUMP

2600

196°

1700

920

1.2 NM to RW20

1.2 NM 1.5 NM 2.4 NM 5 NM

CATEGORY	A	B	C	D
LP MDA	540-1	530 (600-1)	540-1½	530 (600-1½)
LNAV MDA	580-1	570 (600-1)	580-1½	570 (600-1½)
CIRCLING	720-1	708 (800-1)	780-2¼ 768 (800-2¼)	880-2¾ 868 (900-2¾)

NE-1, 03 DEC 2020 to 31 DEC 2020

NE-1, 03 DEC 2020 to 31 DEC 2020