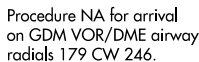


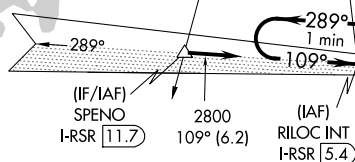
ILS RWY 11 (CAT II & III)
WORCESTER RGNL (ORH)

MISSED APPROACH: Climb to 1800 then climbing right turn to 3000 on heading 230° and GDM VOR/DME R-167 to LAWRN/GDM 23 DME and hold, continue climb-in-hold to 3000.

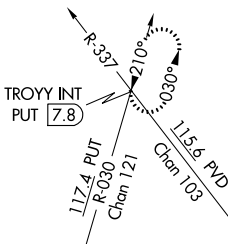
CLNC DEL
119.0
(When twr closed)



Procedure NA for arrivals
at SPENO on V229
southwest bound and
on V270 westbound.



ALTERNATE MISSED
APCH FIX



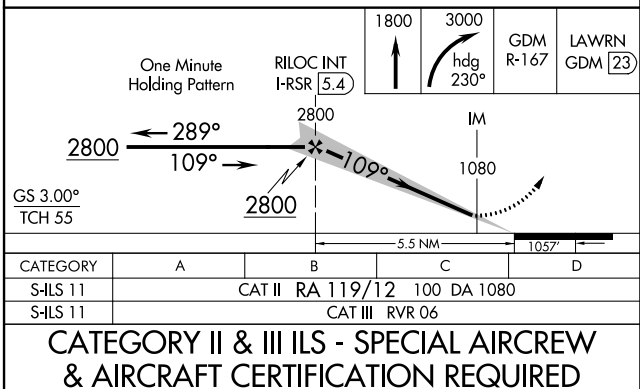
Δ 2048

LOCALIZER 110.9
I-RSR
Chan 46

LAWRN
GDM 23

1560

TDZ/CL Rwy 11
REIL Rwy 15, 29 and 33 **L**
HIRL Rwy 11-29 **L**
MIRL Rwy 15-33 **L**



42°16'N-71°53'W

WORCESTER RGNL (ORH)
ILS RWY 11 (CAT II & III)