

WAAS CH 65638 W23A	APP CRS 235°	Rwy Idg TDZE 78 Apt Elev 79	5000
--	------------------------	---	-------------

RNAV (GPS) RWY 23

NEW BEDFORD RGNL (EWB)

▼

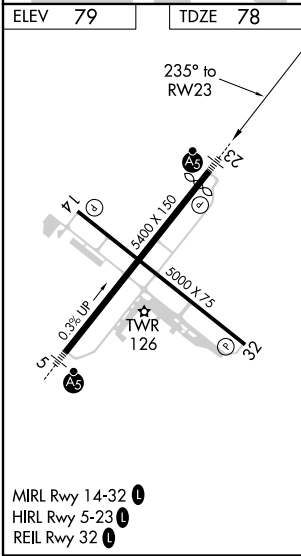
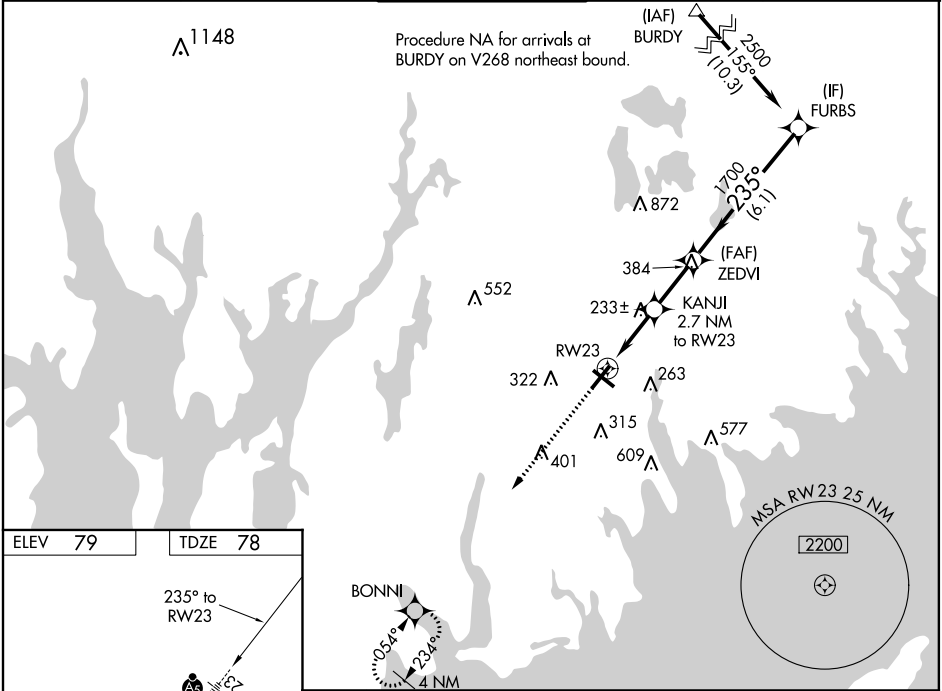
▲

Baro-VNAV and VDP NA when using Taunton altimeter setting. For uncompensated Baro-VNAV systems, LNAV/VNAV NA below -16°C (4°F) or above 54°C (130°F). DME/DME RNP-0.3 NA. Helicopter visibility reduction below ¾ SM NA. When local altimeter setting not received, use Taunton altimeter setting and increase all DA 34 feet and all MDA 40 feet. Increase LNAV and Circling Cat C/D visibility ¼ mile. For inop MALSR, increase LPV all Cats visibility ½ mile, LNAV/VNAV and LNAV Cat A/B visibility ¼ mile. For inop MALSR, when using Taunton altimeter setting, increase LNAV/VNAV all Cats visibility ¾ mile, LNAV Cat A/B visibility ¼ mile and Cat C/D visibility ¾ mile.

MALSR

MISSED APPROACH:
Climb to 2100 direct BONNI and hold.

ATIS 126.85	PROVIDENCE APP CON* 128.7 269.525	NEW BEDFORD TOWER* 118.1 (CTAF) 0 239.0	GND CON 121.9	UNICOM 122.95
-----------------------	---	---	-------------------------	-------------------------



2100	BONNI	KANJI 2.7 NM to RW23	ZEDVI 1700	FURBS 2500
*LNAV only.	*1.2 NM to RW23			
	RW23	980*	1700	GP 3.00° TCH 46
	1.2	1.5 NM	2.3 NM	6.1 NM
CATEGORY	A	B	C	D
LPV DA		359-¾ 281 (300-¾)		
LNAV/VNAV DA		378-¾ 300 (300-¾)		
LNAV MDA		500-¾ 422 (500-¾)		
CIRCLING	600-1 521 (600-1)	640-1 561 (600-1)	720-1¾ 641 (700-1¾)	940-2¾ 861 (900-2¾)