

APP CRS
348°

Rwy Idg
TDZE
1158

Apt Elev
1166

RNAV (GPS) RWY 35

EDWARD F KNAPP STATE (MPV)

RNP APCH.

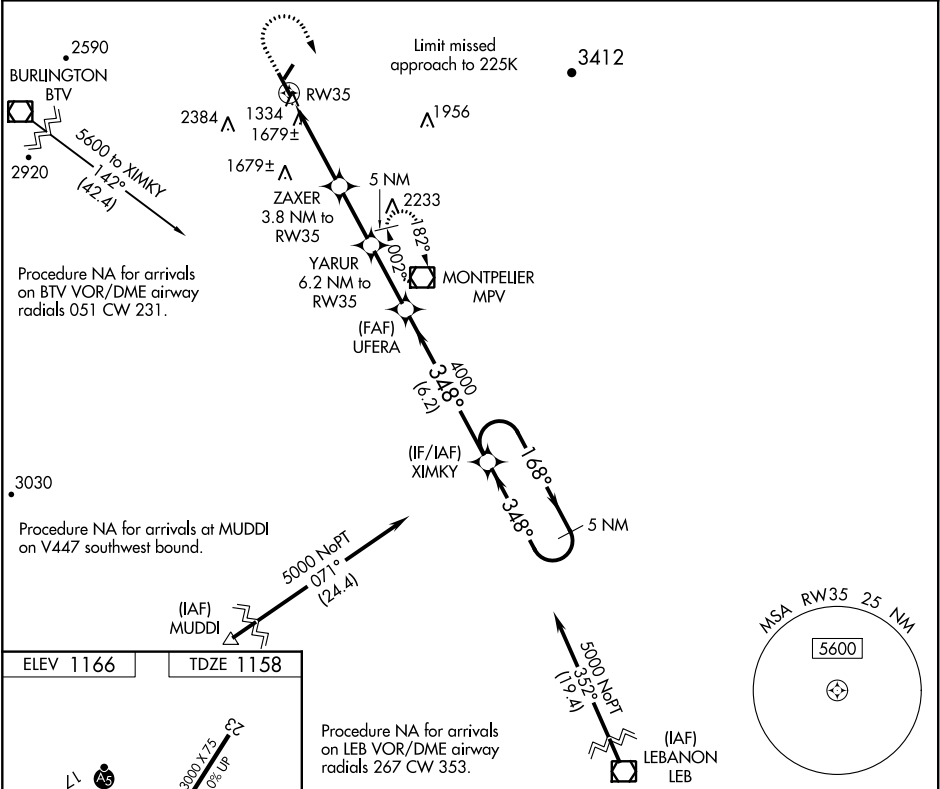
NA

20°C

When local altimeter setting not received, procedure NA. Rwy 35 helicopter visibility reduction below 1 SM NA. Straight-in Rwy 35 NA at night. Circling Rwy 5, 35 NA at night.

MISSED APPROACH: Climb to 2400 then climbing right turn to 5100 direct MPV VOR/DME and hold, continue climb-in-hold to 5100.

ASOS 132.675	BOSTON CENTER 135.7 282.2	UNICOM 122.8 (CTAF) 0
------------------------	-------------------------------------	---------------------------------



ELEV 1166

TDZE 1158

REIL Rwy 17-35

MIRL Rwy 5-23

MIRL Rwy 17-35 0

348° to RW35

3000 X 1.75

1.5% UP

5002 X 100

35

Procedure NA for arrivals on LEB VOR/DME airway radials 267 CW 353.

(IAF) LEBANON LEB

5000 NoPT 355° (19.4)

Visual Segment - Obstacles.

2400 5100 MPV

YARUR 6.2 NM to RW35

UFERA

XIMKY 5 NM Holding Pattern

RW35

ZAXER 3.8 NM to RW35

348° 3160 4000 5000

3.8 NM 2.4 NM 2.6 NM 6.2 NM

CATEGORY	A	B	C	D
LNAV MDA	1940-1 782 (800-1)	1940-1¼ 782 (800-1¼)	1940-2½ 782 (800-2½)	
CIRCLING	1980-1¼	814 (900-1¼)	2700-3 1534 (1600-3)	2920-3 1754 (1800-3)