
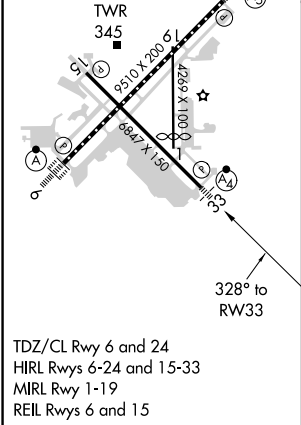
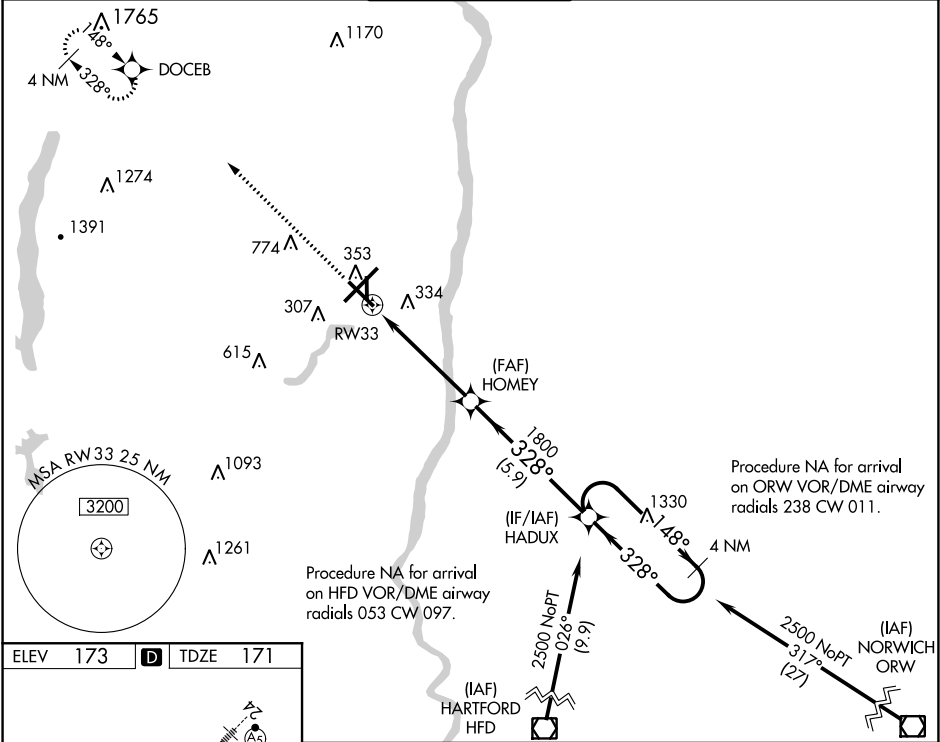


WAAS CH 65628 W33A	APP CRS 328°	Rwy Idg TDZE Apt Elev	6847 171 173
--	------------------------	-----------------------------	---

RNAV (GPS) RWY 33

BRADLEY INTL (BDL)

<div><div>▼</div><div>▲</div></div>	Inop table does not apply to LPV all Cats. For uncompensated Baro-VNAV systems, LNAV/VNAV NA below -17°C (2°F) or above 54°C (130°F). Circling Rwy 19 NA at night. DME/DME RNP-0.3 NA. For inop ALS, increase LNAV/VNAV all Cats visibility to RVR 4500.			MALSF 	MISSED APPROACH: Climb to 3500 direct DOCEB and hold, continue climb-in-hold to 3500.			
D-ATIS 118.15	YANKEE APP CON 123.95 290.55 (061°-240°) 125.35 281.5 (241°-060°)		BRADLEY TOWER 120.3 351.8		GND CON 121.9 348.6		CLNC DEL 121.75 322.3	CPDLC



3500	DOCEB	VGSI and RNAV glidepath not coincident (VGSI Angle 3.00/TCH 72).	HADUX	4 NM Holding Pattern
*LNAV only.	*1 NM to RW33	HOMEY	1800	1800
RW33	1800	328°	148°	2500
1 NM	3.9 NM	5.9 NM		GP 3.00° TCH 59
CATEGORY	A	B	C	D
LPV DA	DA	371/40	200 (200-¾)	
LNAV/VNAV DA	DA	463/40	292 (300-¾)	
LNAV MDA	560/40	389 (400-¾)	560/45	389 (400-¾)
CIRCLING	700-1	527 (600-1)	1120-2¾ 947 (1000-1¾)	1220-3 1047 (1100-3)