

LOC I-BAF	APP CRS	Rwy Idg
111.9	204°	8919
		TDZE
		270
		Apt Elev
		270

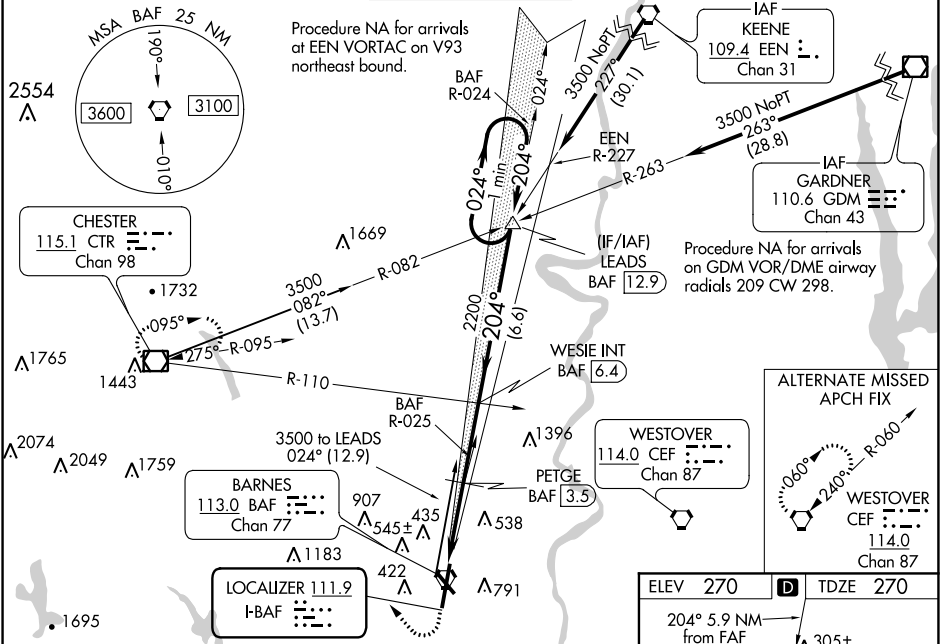
ILS or LOC RWY 20  
WESTFIELD-BARNES RGNL (BAF')

**⚠** When local altimeter setting not received, use Bradley Intl altimeter setting and increase all DA 44 feet and all MDA 60 feet; increase PETGE fix minimums S-LOC 20 Cats C/D/E visibility ¼ mile. For inop MALSR, increase ILS 20 Cat E visibility to RVR 4000; increase S-LOC 20 Cat E visibility to 3 miles; increase PETGE fix minimums S-LOC 20 Cat E visibility to 1½ mile. For inop MALSR when using Bradley Intl altimeter setting increase S-LOC 20 Cat E visibility to 3 miles; increase PETGE fix minimums S-LOC 20 E visibility to 3 miles. Night landing: Rwy 15 NA. \*\* DME from BAF VORTAC. Simultaneous reception of I-BAF and BAF DME required.

**MALSR**

**MISSED APPROACH:**  
Climb to 1300 then climbing right turn to 4000 direct CTR VOR/ DME and hold, continue climb-in-hold to 4000.

ATIS	YANKEE APP CON	WESTFIELD TOWER ★	GND CON	CLNC DEL
127.1 263.15	125.35 281.5	118.9 (CTAF) 251.1	121.7 289.4	121.7 (when tower closed)



1300 4000 CTR \* LOC only.

**WESIE INT** BAF 6.4

**LEADS INT** BAF 12.9

One Minute Holding Pattern

BAF 0.5

PETGE BAF 3.5

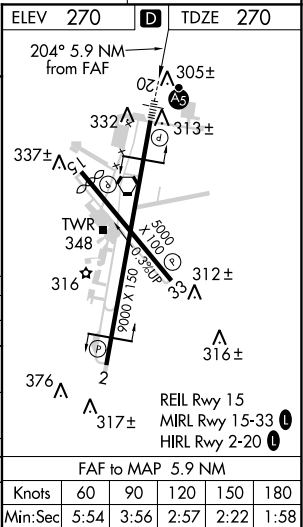
2200 204° 3500

#1260

#1320 when using Bradley Intl altimeter setting.

GS 3.00° TCH 50

CATEGORY	A	B	C	D	E
S-ILS 20	520/24 250 (300-½)				
S-LOC 20	1260/40 990 (1000-¾)	1260/55 990 (1000-1)	1260-2½ 990 (1000-2½)		
CIRCLING	1260-1¼ 990 (1000-1¼)	1260-1½ 990 (1000-1½)	1260-3 990 (1000-3)	1660-3 1390 (1400-3)	
PETGE FIX MINIMUMS **					
S-LOC 20	800/24	530 (600-½)	800/55	530 (600-1)	
CIRCLING	1160-1¼	890 (900-1¼)	1160-2¾ 890 (900-2¾)	1660-3 1390 (1400-3)	



NE-1, 03 DEC 2020 to 31 DEC 2020

NE-1, 03 DEC 2020 to 31 DEC 2020