

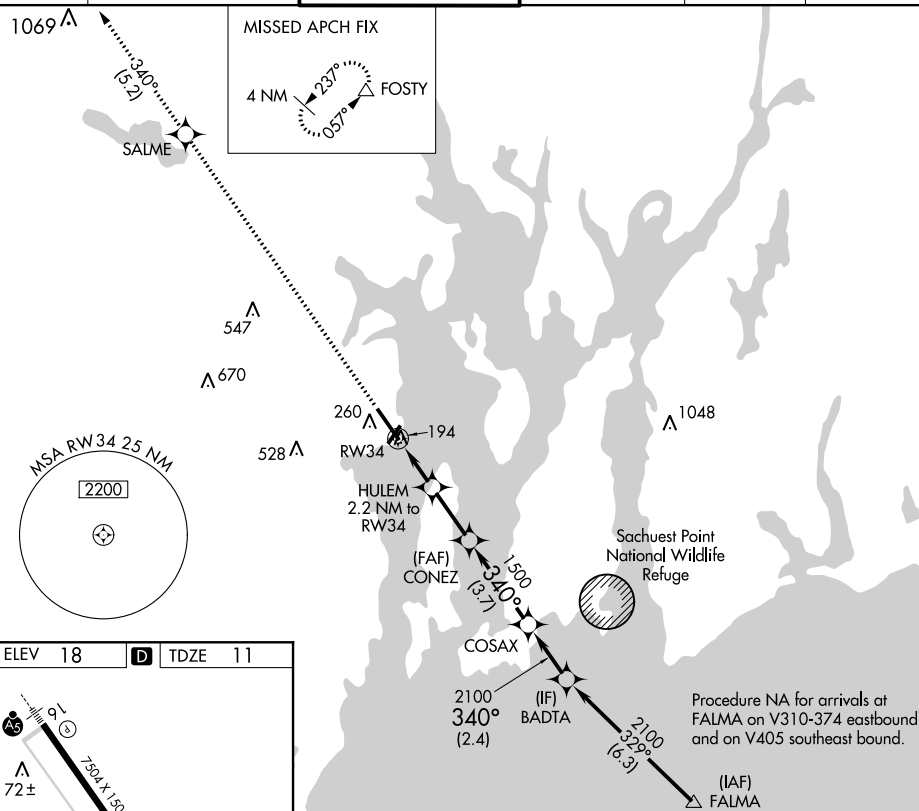
APP CRS	Rwy Idg	7100
340°	TDZE	11
	Apt Elev	18

RNAV (GPS) RWY 34
QUONSET STATE (OQU)

T	Circling Rwy 5 NA at night.
A	Rwy 34 helicopter visibility reduction below 1 SM NA. DME/DME RNP-0.3 NA.

MISSED APPROACH: Climb to 2500 direct SALME and on track 340° to FOSTY and hold.

ATIS ★	PROVIDENCE APP CON ★	QUONSET TOWER ★	GND CON	CLNC DEL	UNICOM
118.6	123.675 244.875	126.35 (CTAF) 0 252.9	134.5 226.675	134.5	122.95



Procedure NA for arrivals at FALMA on V310-374 eastbound and on V405 southeast bound.

