

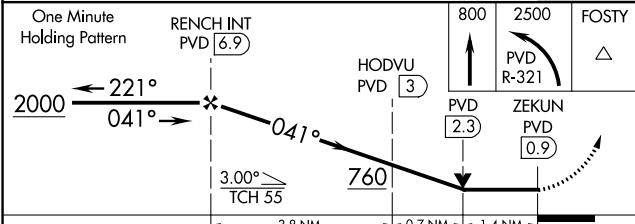
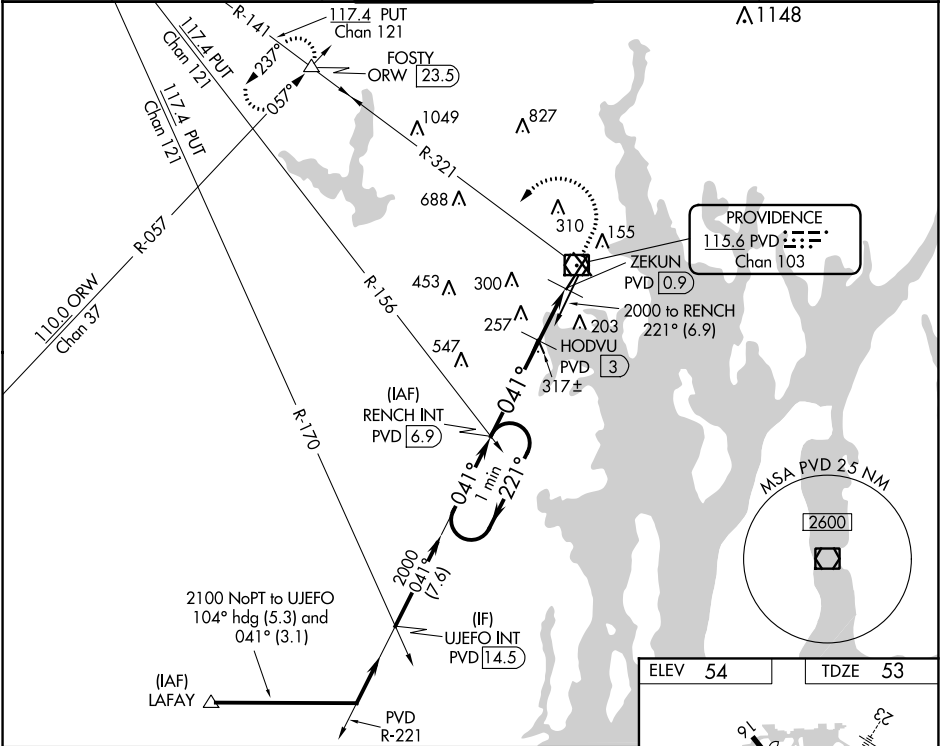
VOR/DME PVD	APP CRS	Rwy Idg	8700
115.6	041°	TDZE	53
Chan 103		Apt Elev	54

VOR RWY 5
THEODORE FRANCIS GREEN STATE (PVD)

⚠ For inop ALS, increase S-5 Cat C/D visibility to 2 SM. When control tower closed: increase S-5 Cats A and B visibility to ¾ SM, and S-5 Cats C and D visibility to 1 ¾ SM. When control tower closed: HODVU fix minimums: increase S-5 Cats A and B visibility to ¾ SM, and S-5 Cats C and D visibility to 1 ¾ SM.

ALSF-2 MISSED APPROACH: Climb to 800 then climbing left turn to 2500 on PVD VOR/DME R-321 to FOSTY INT/ORW 23.5 DME and hold.

D-ATIS	PROVIDENCE APP CON ★	PROVIDENCE TOWER ★	GND CON	CLNC DEL
124.2	123.675 244.875	120.7 (CTAF) 257.8	121.9 348.6	126.65 348.6



CATEGORY	A	B	C	D
S-5	760/24	707 (800-½)	760-1 ⅝	707 (800-1 ⅝)
C CIRCLING	760-1	706 (800-1)	760-2	860-2 ½
			706 (800-2)	806 (900-2 ½)
HODVU FIX MINIMUMS				
S-5	560/24	507 (600-½)	560/55	507 (600-1)
C CIRCLING	560-1	640-1	640-1 ½	860-2 ½
	506 (600-1)	586 (600-1)	586 (600-1 ½)	806 (900-2 ½)

