


APP CRS	Rwy Idg	8700
227°	TDZE	50
	Apt Elev	55

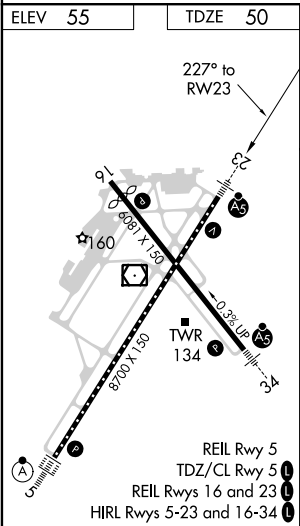
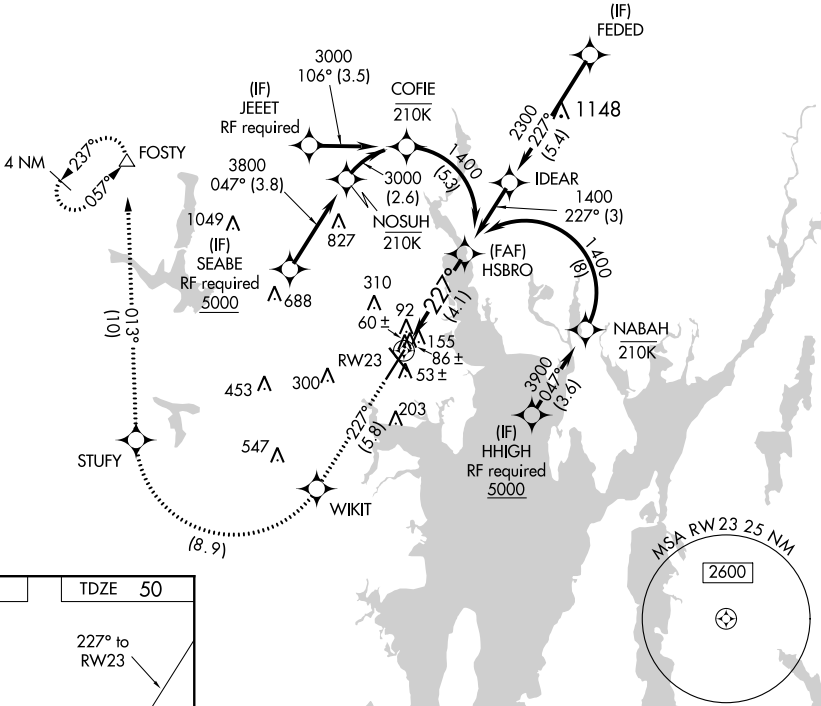
RNAV (RNP) Z RWY 23




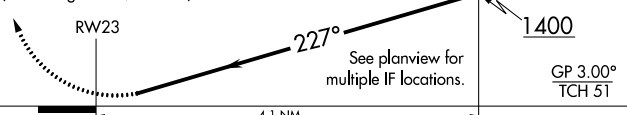
THEODORE FRANCIS GREEN STATE (PVD)

<div><div>▼</div><div>For uncompensated Baro-VNAV systems, procedure NA below -15°C (5°F) or above 48°C (118°F). RF required. For inop MALSR, increase RNP 0.30 all Cats visibility to 1¼. GPS Required.</div></div>	<div><div>MALSR</div><div></div></div>	<div>Climb to 2500 on track 227° to WIKIT and right turn to STUFY and on track 013° to FOSTY and hold.</div>
--	---	--

D-ATIS 124.2	PROVIDENCE APP CON ★ 123.675 244.875	PROVIDENCE TOWER ★ 120.7 (CTAF) 257.8	GND CON 121.9 348.6	CLNC DEL 126.65 348.6
-----------------	---	--	------------------------	--------------------------

RADAR REQUIRED



2500 ↑ fr 227°	WIKIT 		STUFY 	fr 013°	FOSTY △	HSBRO 1400
VGSI and RNAV glidepath not coincident (VGSI Angle 3.00/TCH 41).						
						
RW23						1400
227°						GP 3.00° TCH 51
See planview for multiple IF locations.						
CATEGORY	A	B	C	D		
RNP 0.30 DA	434/40 384 (400-¾)					
AUTHORIZATION REQUIRED						