

WAAS
CH **86218**
W05A

APP CRS
047°

Rwy Idg
TDZE **53**
Apt Elev **54**

RNAV (GPS) RWY 5

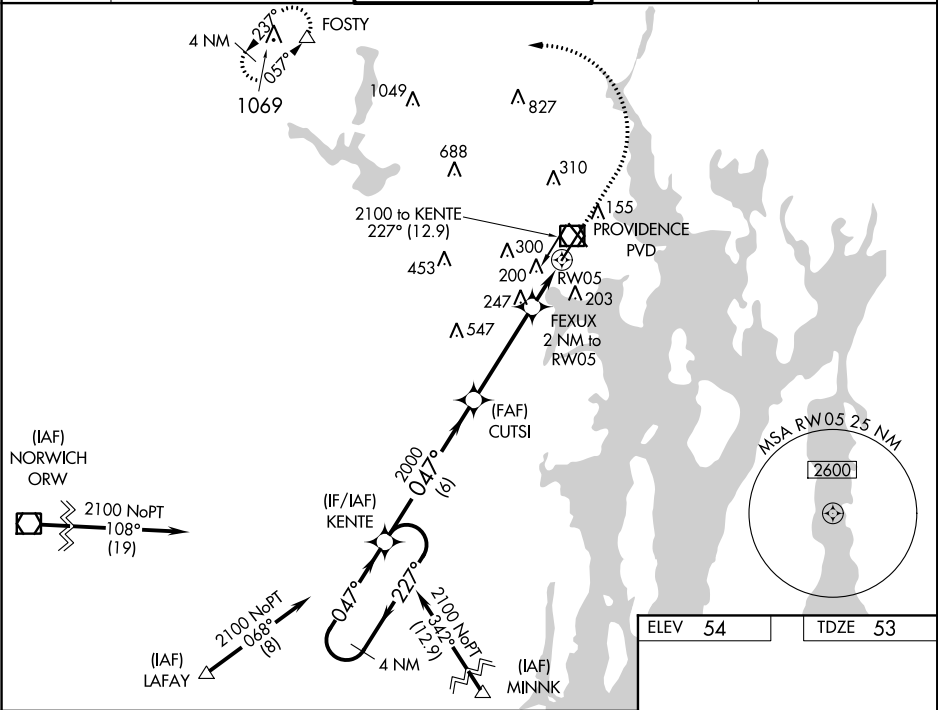
THEODORE FRANCIS GREEN STATE (PVD)

▼ For uncompensated Baro-VNAV systems, LNAV/VNAV NA below -16°C (3°F) or above 54°C (130°F). DME/DME RNP-0.3 NA. When tower closed: increase LPV, LNAV/VNAV all Cats and LNAV Cats A and B visibilities to ¾ SM, and LNAV Cats C and D visibility to 1 SM. When control tower closed: For inop ALS, increase LNAV Cats C and D visibility to 1 ¾ SM.

ALSF-2

MISSED APPROACH: Climb to 800 then climbing left turn to 2500 direct FOSTY and hold.

D-ATIS 124.2	PROVIDENCE APP CON * 123.675 244.875	PROVIDENCE TOWER * 120.7 (CTAF) 257.8	GND CON 121.9 348.6	CLNC DEL 126.65 348.6
------------------------	--	---	-------------------------------	---------------------------------



4 NM Holding Pattern		KENTE	800	2500	FOSTY
2100		227°	047°	047°	
GP 3.00° TCH 53					
		2000	CUTSI	FEXUX 2 NM to RW05 *1.1 NM to RW05	*LNAV only.
				*740	
		6 NM	4 NM	0.9	1.1
CATEGORY	A	B	C	D	
LPV DA		253/18	200 (200-½)		
LNAV/VNAV DA		361/24	308 (400-½)		
LNAV MDA	460/24	407 (500-½)	460/40	407 (500-¾)	
CIRCLING	560-1 506 (600-1)	640-1 586 (600-1)	640-1½ 586 (600-1½)	860-2½ 806 (900-2½)	

