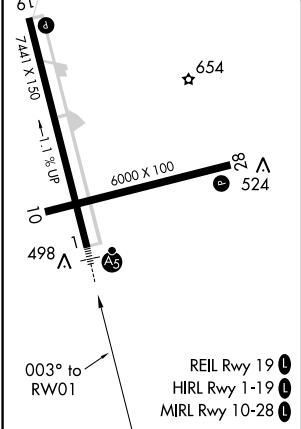
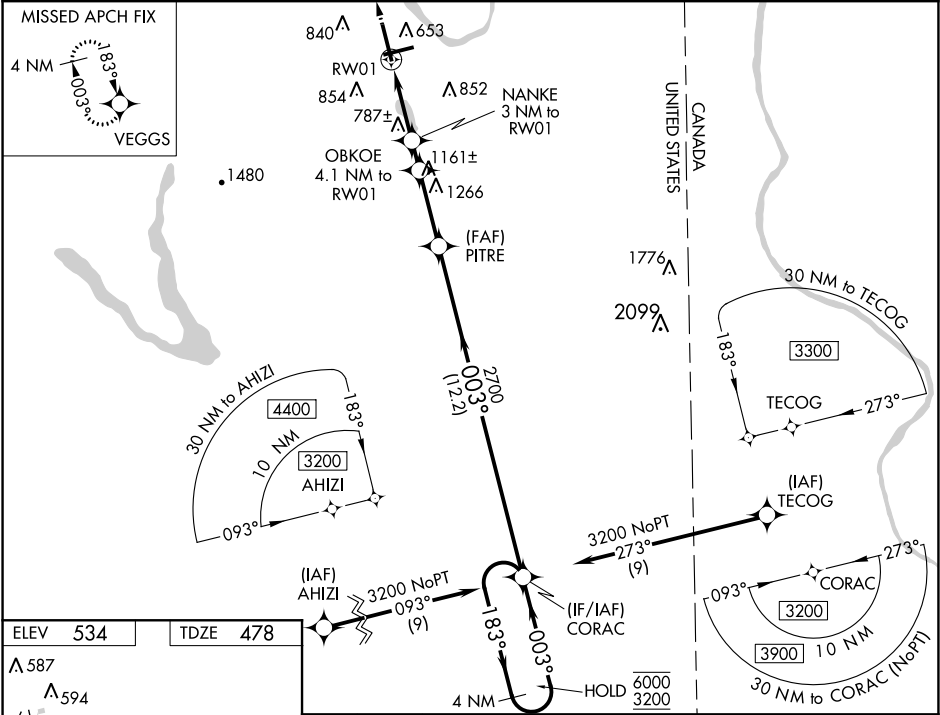




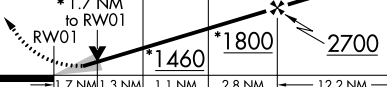

WAAS CH 87012 W01A	APP CRS 003°	Rwy Idg TDZE Apt Elev	7441 478 534
--	------------------------	-----------------------------	---

RNAV (GPS) RWY 1
PRESQUE ISLE INTL (PQI)

RNP APCH: ▽ ▲ -30°C	For uncompensated Baro-VNAV systems, LNAV/VNAV NA below -16°C or above 54°C. For inop ALS, increase LNAV/VNAV all Cats visibility to 1% SM and LNAV Cat C/D to 1% SM.	MALSR A5	MISSED APPROACH: Climb to 3000 direct VEGGS and hold.
------------------------------	---	-------------	--

AWOS-3PT 118.025	BOSTON CENTER 124.75 239.05	CLNC DEL 121.6	UNICOM 122.8 (CTAF)	122.6 0
----------------------------	---------------------------------------	--------------------------	-------------------------------	----------------



3000	VEGGS					CORAC	4 NM
						Holding Pattern	
*LNAV only.		NANKE 3 NM to RW01		OBKOE 4.1 NM to RW01	PITRE 2700	183° → 6000 ← 003° 3200	
						GP 3.00° TCH 50	
CATEGORY		A		B		C	D
LPV DA		678-½			200 (200-½)		
LNAV/ VNAV DA		971-1			493 (500-1)		
LNAV MDA		1040-½	562 (600-½)			1040-1¼	562 (600-1¼)
 CIRCLING		1180-1	646 (700-1)	1300-2¼ 766 (800-2¼)		1360-2¾ 826 (900-2¾)	

NE-1, 03 DEC 2020 to 31 DEC 2020

NE-1, 03 DEC 2020 to 31 DEC 2020