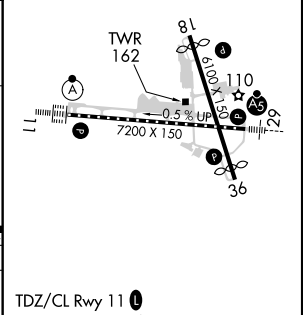
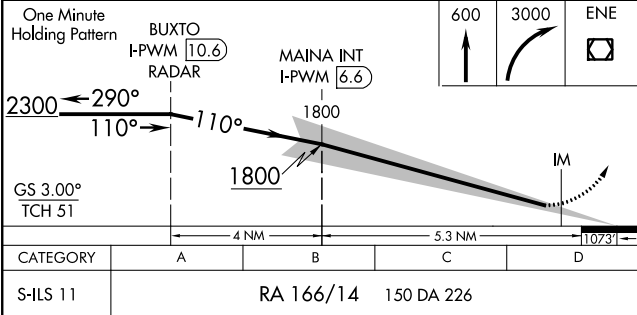
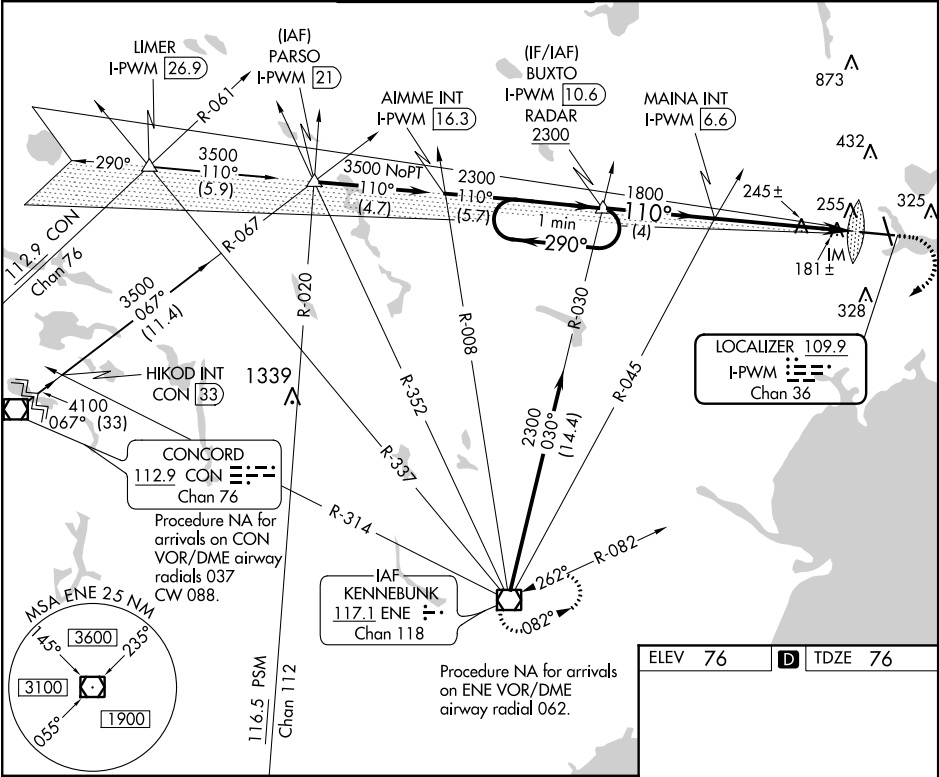


LOC/DME I-PWM 109.9 Chan 36	APP CRS 110°	Rwy Idg 7200 TDZE 76 Apt Elev 76
---	------------------------	---

ILS RWY 11 (SA CAT I)
PORTLAND INTL JETPORT (PWM)

⚠ Procedure NA when control tower closed. Requires specific OPSPEC, MSPEC, or LOA approval and use of HUD to DH.	ALSIF-2 	MISSED APPROACH: Climb to 600 then climbing right turn to 3000 direct ENE VOR/DME and hold.
---	-------------	---

ATIS 119.05	PORTLAND APP CON ★ 119.75 269.35	PORTLAND TOWER ★ 120.9 0 (CTAF) 257.8	GND CON 121.9	CLNC DEL 121.9	UNICOM 122.95
-----------------------	--	---	-------------------------	--------------------------	-------------------------



SA CATEGORY I ILS - SPECIAL AIRCREW & AIRCRAFT CERTIFICATION REQUIRED

NE-1, 03 DEC 2020 to 31 DEC 2020

NE-1, 03 DEC 2020 to 31 DEC 2020