

LOC/DME I-PWM <b>109.9</b> Chan <b>36</b>	APP CRS <b>110°</b>	Rwy Idg <b>7200</b> TDZE <b>76</b> Apt Elev <b>76</b>
---	------------------------	---

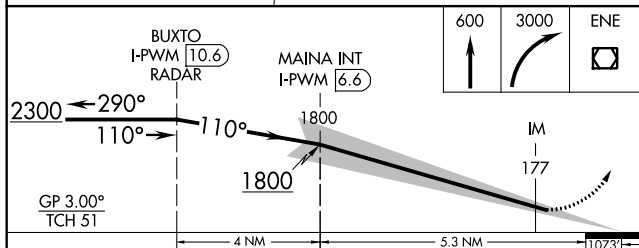
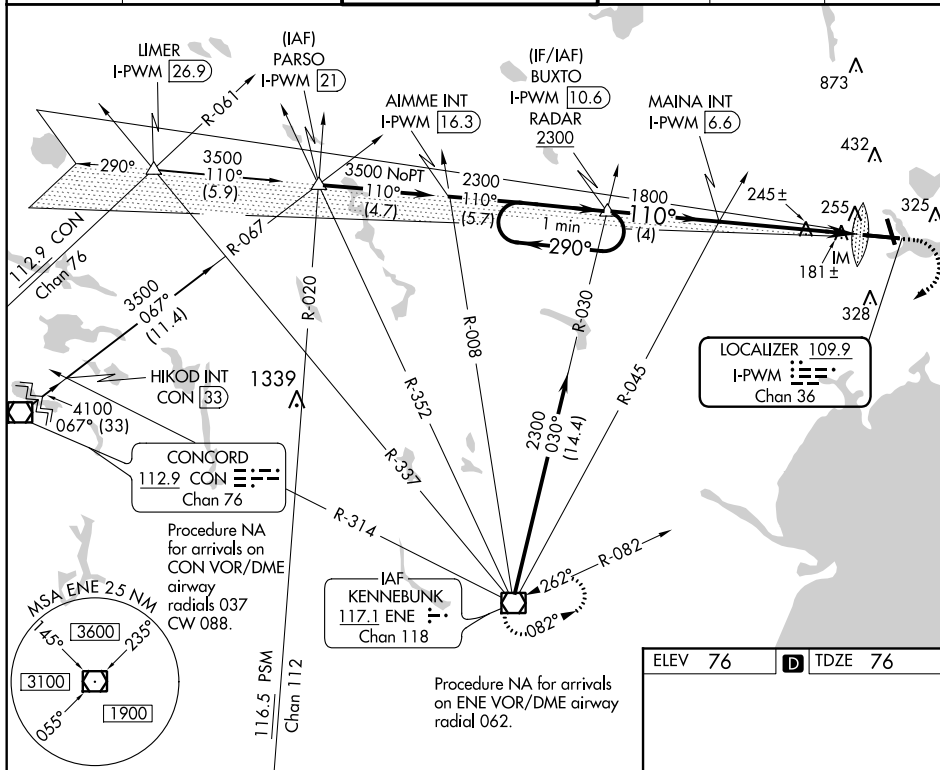
20310  
ILS RWY 11 (CAT II & III)  
PORTLAND INTL JETPORT (PWM)

<b>T</b>	Procedure NA when control tower closed.
----------	---

ALSF-2

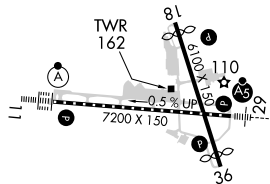
**MISSED APPROACH:** Climb to 600 then climbing right turn to 3000 direct ENE VOR/DME and hold.

ATIS 119.05	PORTLAND APP CON ★ 119.75 269.35	PORTLAND TOWER ★ 120.9 0 (CTAF) 257.8	GND CON 121.9	CLNC DEL 121.9	UNICOM 122.95
----------------	-------------------------------------	--	------------------	-------------------	------------------



CATEGORY	A	B	C	D
S-ILS 11	CAT II RA 108/12 100 DA 176			
S-ILS 11	CAT III RVR 06			

## CATEGORY II & III ILS-SPECIAL AIRCREW & AIRCRAFT CERTIFICATION REQUIRED



TDZ/CL Rwy 11 **L**  
MIRL Rwy 18-36 **L**  
HIRL Rwy 11-29 **L**  
REIL Rwys 18 and 36 **L**