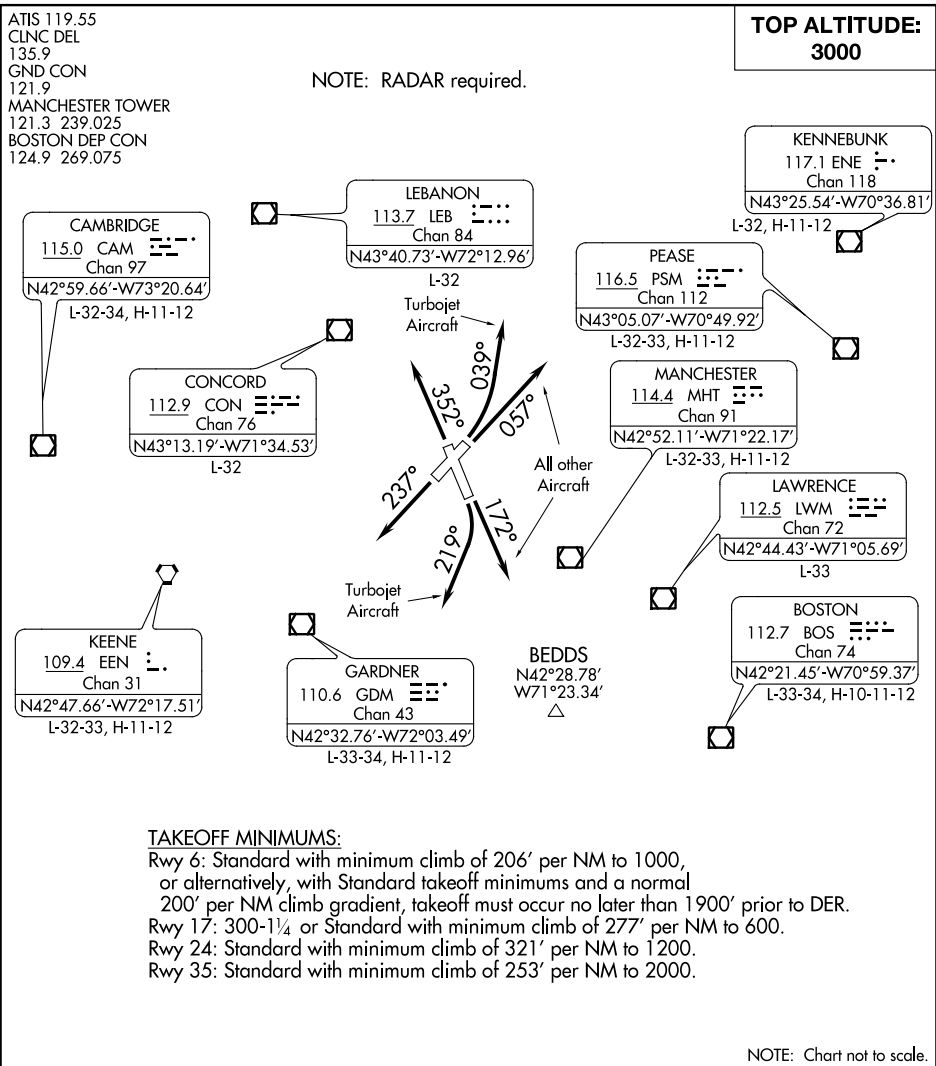


MANCHESTER NINE DEPARTURE



DEPARTURE ROUTE DESCRIPTION

TAKEOFF RUNWAY 6: TURBOJET AIRCRAFT - Climbing left turn heading 039°, thence
ALL OTHER AIRCRAFT - Climb heading 057° or as assigned by ATC, thence

TAKEOFF RUNWAY 17: TURBOJET AIRCRAFT - Climbing right turn heading 219°, thence
ALL OTHER AIRCRAFT - Climb heading 172° or as assigned by ATC, thence

TAKEOFF RUNWAY 24: Climb heading 237° or as assigned by ATC, thence

TAKEOFF RUNWAY 35: Climb heading 352° or as assigned by ATC, thence

. . . . expect vectors to assigned Route/Navaid/Fix. Maintain 3000 or as assigned by ATC.
Expect clearance to filed altitude/flight level within five (5) minutes after departure.

NE-1, 03 DEC 2020 to 31 DEC 2020

NE-1, 03 DEC 2020 to 31 DEC 2020