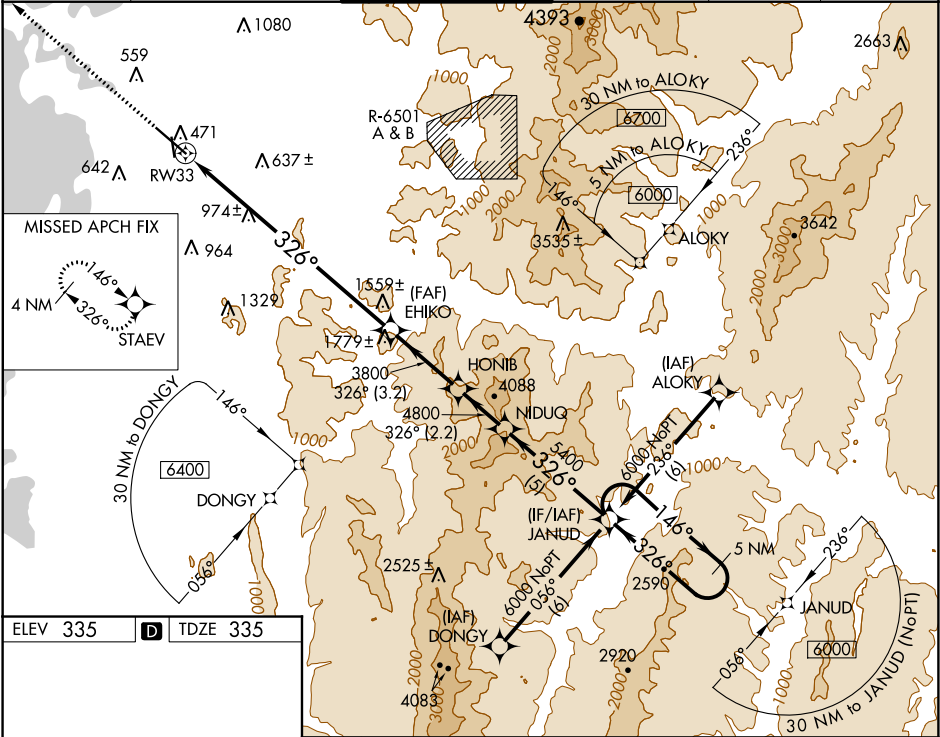


WAAS CH 65812 W33A	APP CRS 326°	Rwy ldg TDZE 335 Apt Elev 335
--	------------------------	---

RNAV (GPS) Z RWY 33
BURLINGTON INTL (BTV)

RNP APCH. Inoperative table does not apply. For uncompensated Baro-VNAV systems, LNAV/VNAV NA below -15°C (5°F) or above 54°C (130°F). Rwy 33 helicopter visibility reduction below ¾ SM NA.	MALSF MISSED APPROACH: Climb to 3000 direct STA EV and hold.
---	---

ATIS 123.8 269.9	BURLINGTON APP CON * 121.1 278.8	BURLINGTON TOWER * 118.3 (CTAF) 0 257.8	GND CON 126.3 348.6	CLNC DEL 119.15	UNICOM 122.95
----------------------------	--	---	-------------------------------	---------------------------	-------------------------



ELEV 335	D	TDZE 335
3000 STA EV		
* LNAV only		
* 4.8 NM to RW33		
RW33		
EHICO 3800		
HONIB 4800		
NIDUQ 5400		
JANUD 6000		
5 NM Holding Pattern		
GP 3.20° TCH 55		
CATEGORY	A	B
LPV DA	535/40 200 (200-¾)	585/50 250 (300-1)
LNAV/VNAV DA	1782-5 1447 (1500-5)	
LNAV MDA	2000/60 1665 (1700-1½)	2000-1½ 2000-3 1665 (1700-3)

NE-1, 03 DEC 2020 to 31 DEC 2020

NE-1, 03 DEC 2020 to 31 DEC 2020