

WAAS CH <b>72736</b> <b>W15A</b>	APP CRS <b>146°</b>	Rwy Idg TDZE Apt Elev	<b>7820</b> <b>326</b> <b>335</b>
--	------------------------	-----------------------------	---

**RNAV (GPS) RWY 15**  
BURLINGTON INTL (BTV)

RNP APCH.

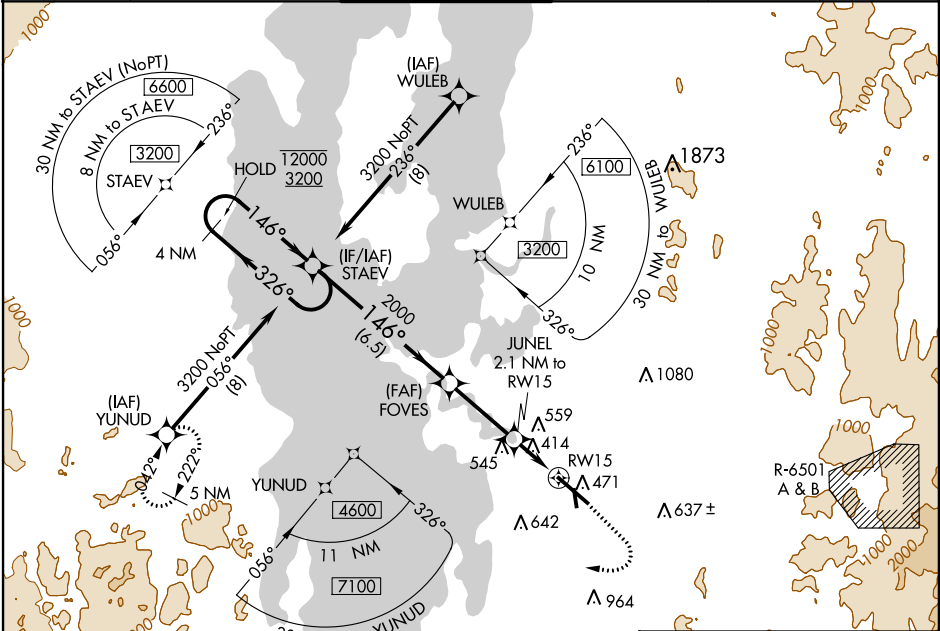
**V**  
**A**  
**-10°C**

Circling Rwy 1 NA at night. For uncompensated Baro-VNAV systems, LNAV/VNAV NA below -19°C or above 54°C.

MALSR

**MISSED APPROACH:** Climb to 1000 then climbing right turn to 5600 direct YUNUD and hold. Continue climb-in-hold to 5600.

ATIS <b>123.8 269.9</b>	BURLINGTON APP CON ★ <b>121.1 278.8</b>	BURLINGTON TOWER ★ <b>118.3 (CTAF) 257.8</b>	GND CON <b>126.3 348.6</b>	CLNC DEL <b>119.15</b>	UNICOM <b>122.95</b>
----------------------------	--	---	-------------------------------	---------------------------	-------------------------



4 NM Holding Pattern		STADEV	FOVES	JUNEL	2.1 NM to RW15	1.1 NM to RW15	1 NM to RW15
12000 3200		326°	146°	2000	2000	1020	
GP 3.00° TCH 51							
CATEGORY	A	B	C	D			
LPV DA	526/24		200 (200-½)				
LNAV/VNAV DA	645/30		319 (400-¾)				
LNAV MDA	680/24	354 (400-½)	680/30		354 (400-¾)		
CIRCLING	840-1 505 (600-1)	860-1 525 (600-1)	1200-2½ 865 (900-2½)		1380-3 1045 (1100-3)		

ELEV 335

TDZE 326

146° to RW15

YUNUD

TWR 441

MIRL Rwy 1-19

HIRL Rwy 15-33

NE-1, 03 DEC 2020 to 31 DEC 2020

NE-1, 03 DEC 2020 to 31 DEC 2020