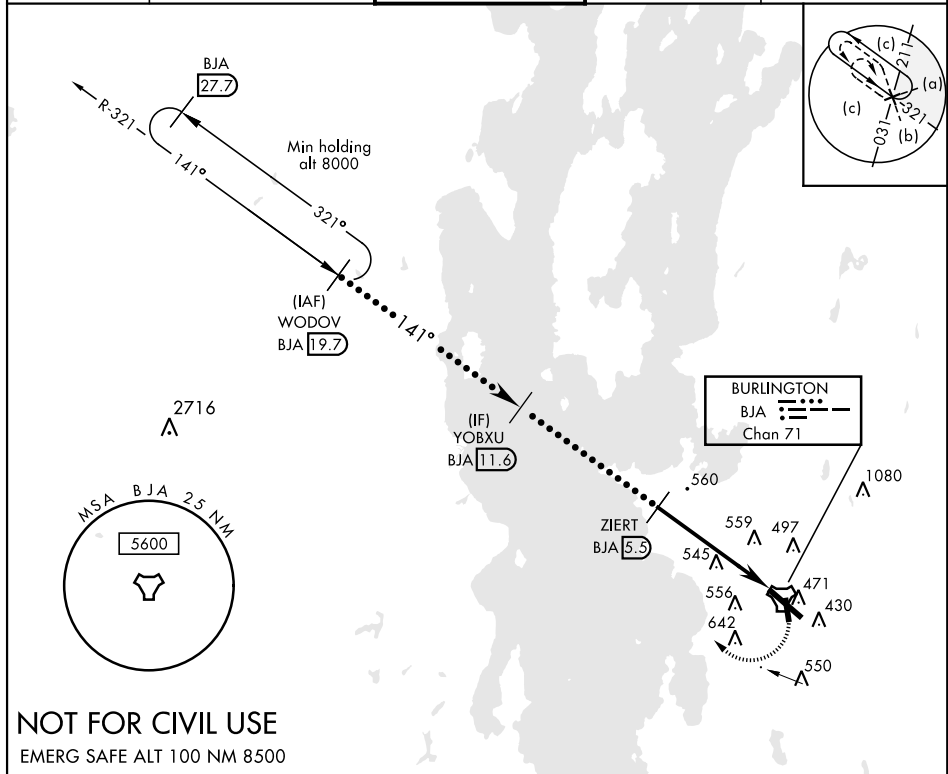
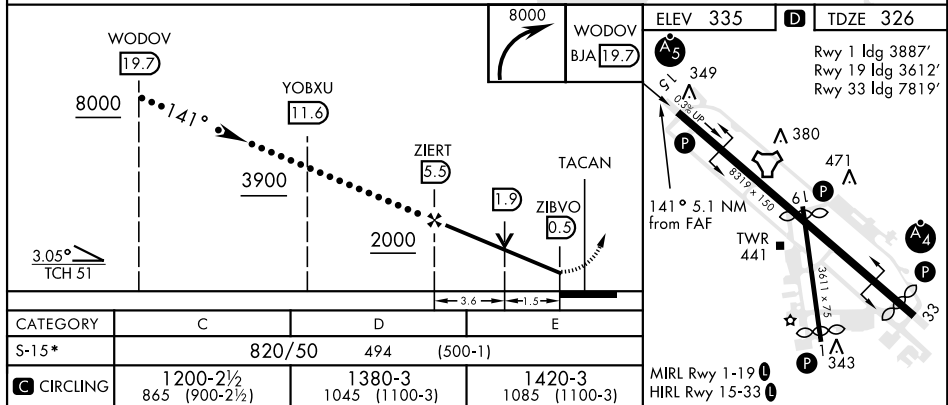


# HI-TACAN RWY 15

TACAN BJA Chan <b>71</b>	APCH CRS <b>141°</b>	Rwy ldg TDZE Arprt Elev <b>7819</b> <b>326</b> <b>335</b>	JAL-70 [USAF]	BURLINGTON INTL (KBTV)	
<b>▼</b> Night Landing: RWY 1 NA. <b>▲</b> * When ALS inop, increase CAT C/D/E vis to 1½ mile.			<b>MALSR</b> 	<b>MISSED APPROACH:</b> Climbing right turn to 8000 on BJA R-321 to WODOV / BJA 19.7 DME and hold, continue climb-in-hold to 8000.	
ATIS <b>123.8 269.9</b>	BURLINGTON APP CON <b>121.1 278.8</b>	BURLINGTON TOWER ★ <b>118.3 (CTAF) 0257.8</b>	GND CON <b>126.3 348.6</b>	CLNC DEL <b>119.15</b>	



**NOT FOR CIVIL USE**  
EMERG SAFE ALT 100 NM 8500



# HI-TACAN RWY 15