


WAAS CH 45925 W22A	APP CRS 215°	Rwy Idg 8806 TDZE 16 Apt Elev 19
--	------------------------	---

RNAV (GPS) RWY 22L

GENERAL EDWARD LAWRENCE LOGAN INTL (BOS)

<p>▼ DME/DME RNP-0.3 NA. Circling NA to Rwy 14. Circling NA for Cats C and D west of Rwy 4L and 15R. For inoperative ALS, increase LNAV/VNAV Cat D visibility to RVR 6000 and LNAV Cat D visibility to 1½ SM. For uncompensated Baro-VNAV systems, LNAV/VNAV NA below -13°C (9°F) or above 43°C (109°F).</p>	<p>MALSF</p> <p></p>	<p>MISSED APPROACH: Climb to 3000 direct WINNI and hold.</p>
---	--	---

D-ATIS 135.0	BOSTON APP CON 120.6 263.1	BOSTON TOWER 128.8 257.8 (WEST) 132.225 257.8 (EAST)	GND CON 121.9 121.75	CLNC DEL 121.65 257.8	CPDLC
-----------------	-------------------------------	--	-------------------------	--------------------------	-------

RADAR REQUIRED



MISSED APCH FIX

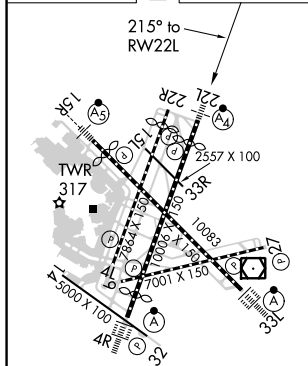
WINNI

A 1447

MSA RWZL 25 NM

2500

ELEV	19	D	TDZE	16
------	----	----------	------	----



TDZ/CL Rwy 4R, 15R and 33L
REIL Rwy 4L, 27 and 32
MIRL Rwy 15L-33R
HIRL Rwy 4L-22R, 4R-22L,
9-27, 14-32 and 15R-33L

CATEGORY	A	B	C	D
LPV DA	216/40	200 (200-¾)		
RNAV/VNAV DA	408/50	392 (400-1)		
RNAV MDA	540/40	524 (600-¾)	540-1¼	524 (600-1¼)
CIRCLING	960-1¼ 941 (1000-1¼)	1060-1½ 1041 (1100-½)	640-1¾ 621 (700-1¾)	640-2 621 (700-2)

RNAV (GPS) RWY 22L