
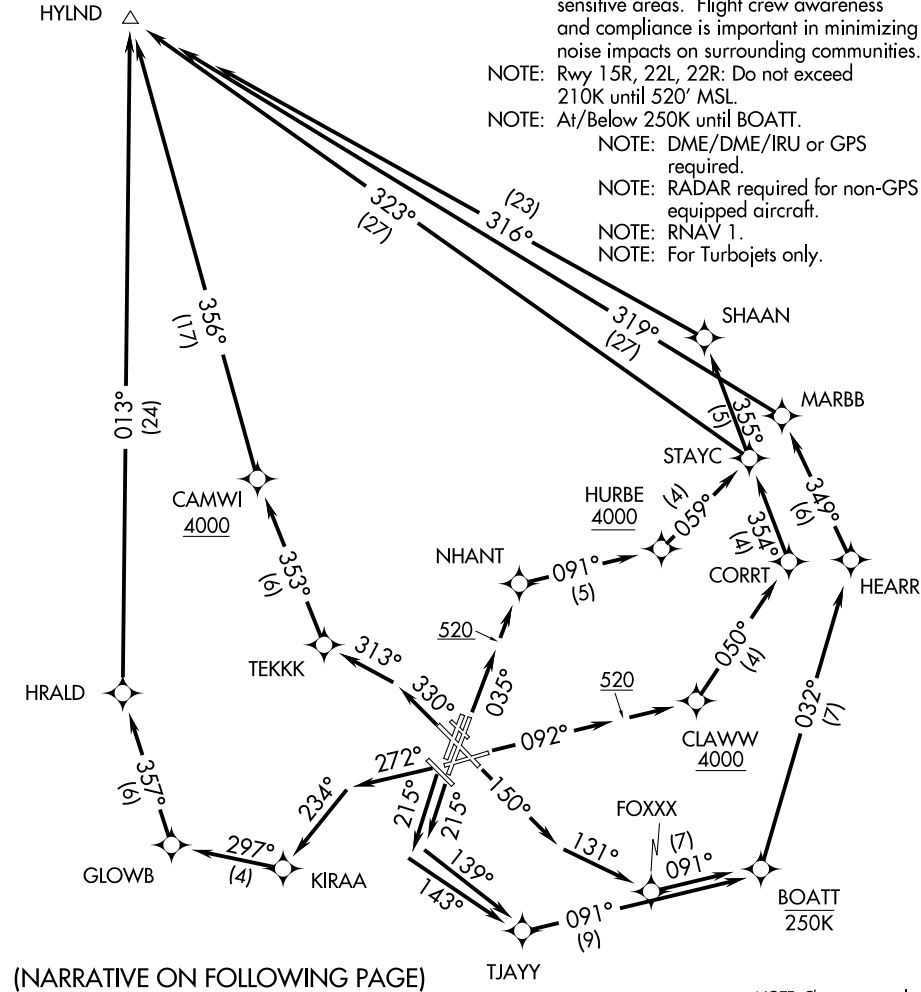


D-ATIS 135.0
CLNC DEL
121.65 257.8
CPDLC
GND CON
121.9 121.75
BOSTON TOWER
128.8 257.8 (WEST)
132.225 257.8 (EAST)
BOSTON DEP CON
133.0

 MANCHESTER
MHT

TAKEOFF MINIMUMS:
Rwys 4L, 14, 15L, 32, 33R: NA - ATC
Rwy 4R: Standard with minimum climb of 500' per NM to 3600.
Rwy 9: Standard with minimum climb of 500' per NM to 4000.
Rwys 15R, 22R: Standard with minimum climb of 500' per NM to 520.
Rwy 22L: 300-1 with minimum climb of 500' per NM to 520, or standard with minimum climb of 500' per NM to 520 if tower reports no tall vessels in the departure area.
Rwy 27: Standard with a minimum climb of 500' per NM to 1300.
Rwy 33L: Standard with a minimum climb of 500' per NM to 3100.

TOP ALTITUDE:
5000



(NARRATIVE ON FOLLOWING PAGE)

NOTE: Chart not to scale.