

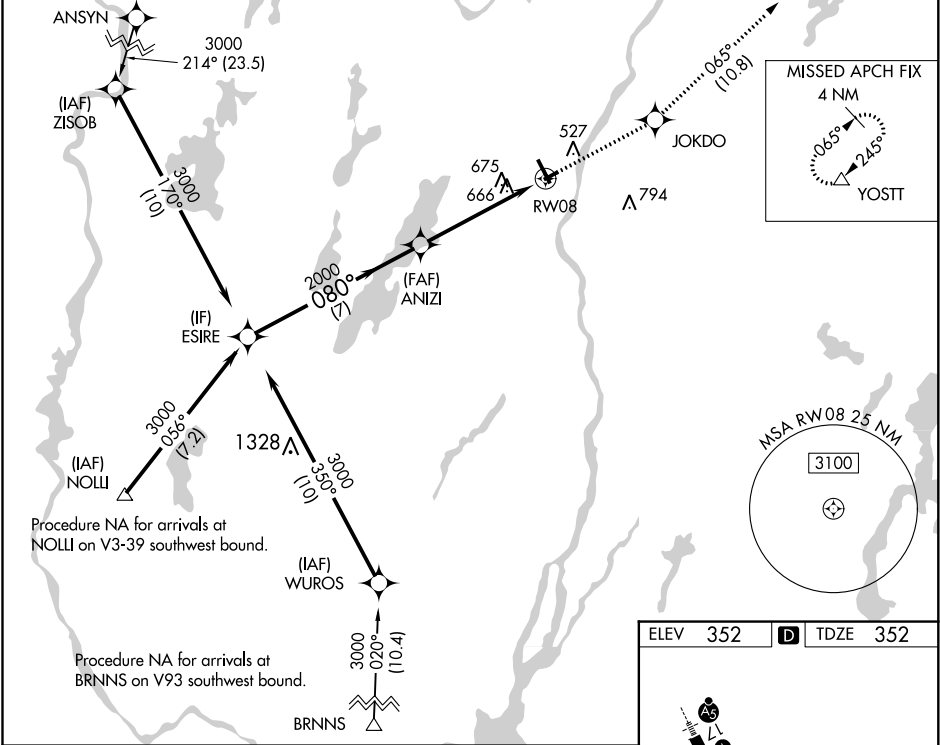
WAAS CH <b>82427</b> <b>W08A</b>	APP CRS <b>080°</b>	Rwy Idg TDZE Apt Elev	<b>2703</b> <b>352</b> <b>352</b>
--	------------------------	-----------------------------	---

RNAV (GPS) RWY 8

AUGUSTA STATE (AUG)

<p>▼ DME/DME RNP-0.3 NA. When local altimeter setting not received, use Waterville altimeter setting and increase all MDA 40 feet; increase LP Cats C/D visibility ½ mile.</p> <p>▲ Rwy 8, 26 helicopter visibility below 1 SM NA. Straight-in Rwy 8 NA at night, Circling Rwy 8, 26 NA at night.</p>	MISSED APPROACH: Climb to 3000 direct JOKDO and on track 065° to YOSTT and hold.
---	--

ASOS <b>118.325</b>	PORTLAND APP CON ★ <b>128.35 299.2</b>	CLNC DEL <b>119.95 299.2</b>	UNICOM <b>123.0 (CTAF) 0</b>
------------------------	---	---------------------------------	---------------------------------



Visual Segment - Obstacles.				
ESIRE		JOKDO	tr	YOSTT
3000		3000	065°	△
ANIZI		RW08		
2000		080° to RW08		
7 NM		5.1 NM		
CATEGORY	A	B	C	D
LP MDA	920-1	568 (600-1)	920-1½	568 (600-1½)
LNAV MDA	940-1	588 (600-1)	940-1¾	588 (600-1¾)
CIRCLING	940-1	980-1	980-1¾	980-2
	588 (600-1)	628 (700-1)	628 (700-1¾)	628 (700-2)