

WAAS CH 93742 W35A	APP CRS 353°	Rwy Idg TDZE 1409 Apt Elev 1409
--	------------------------	---

RNAV (GPS) RWY 35


SIoux COUNTY RGNL(SXX)

RNP APCH.

▼

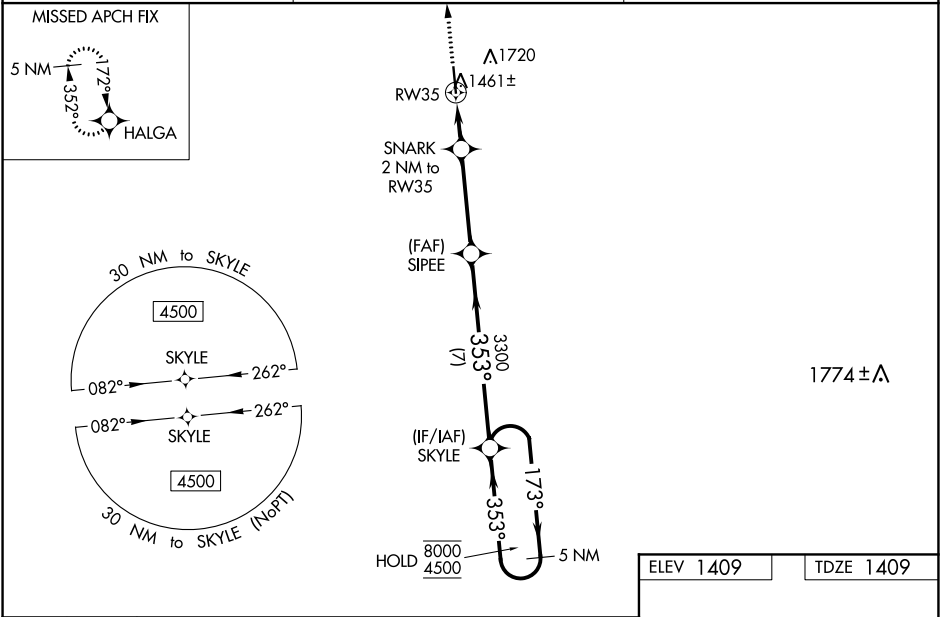
Baro-VNAV and VDP NA when using Le Mars altimeter setting. For uncompensated Baro-VNAV systems, LNAV/VNAV NA below -17°C or above 54°C. When local altimeter setting not received; use Le Mars altimeter setting: increase DA 59 feet and all MDA 60 feet, increase LNAV visibility Cat C/D to ½ SM. For inop ALS, increase LNAV/VNAV all Cats visibility to ¾ SM, and LNAV Cat C/D visibility to ¾ SM. For inop ALS when using Le Mars altimeter setting increase LNAV/VNAV all Cats visibility to ¾ SM.



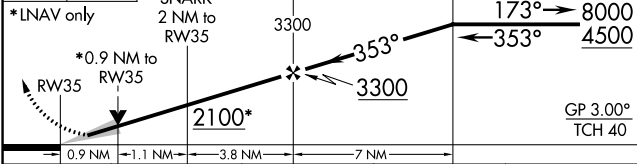

MALSR



MISSED APPROACH: Climb to 4500 direct HALGA and hold.

AWOS-3P 120.075	SIoux CITY APP CON ★ 124.6 307.0	UNICOM 122.7 (CTAF) 
---------------------------	--	---



<div>4500 HALGA</div> <div> </div> <div>*LNAV only</div> <div></div>				
CATEGORY	A	B	C	D
LPV DA		1609-½	200 (200-½)	
LNAV/VNAV DA		1659-½	250 (300-½)	
LNAV MDA		1720-½	311 (400-½)	
 CIRCLING	1820-1 411 (500-1)	2080-1 671 (700-1)	2080-2 671 (700-2)	2080-2¼ 671 (700-2¼)

