

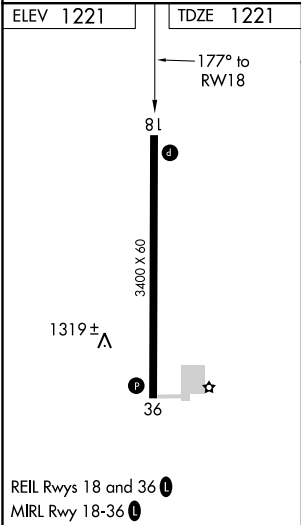
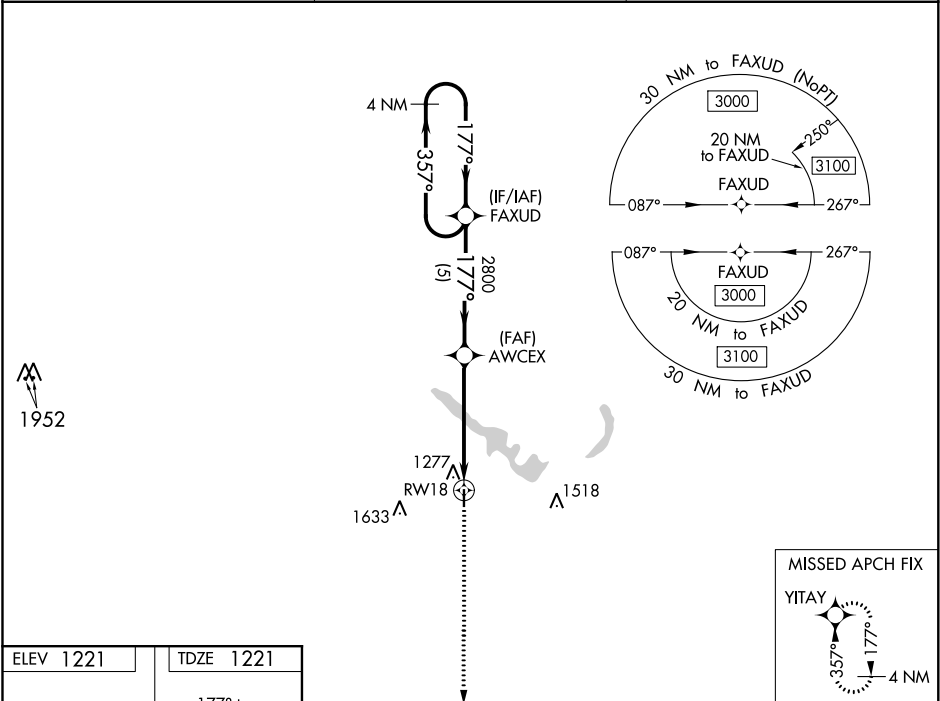
WAAS CH <b>69533</b> <b>W18A</b>	APP CRS <b>177°</b>	Rwy Idg TDZE <b>1221</b> Apt Elev <b>1221</b>
--	------------------------	---


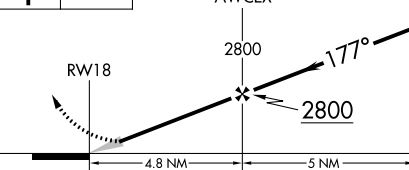

RNAV (GPS) RWY 18

GUTHRIE COUNTY RGNL (GCT)

<div><div>Baro-VNAV NA. DME/DME RNP-0.3 NA. Use Audubon altimeter setting; when not received, use Carroll altimeter setting and increase LPV DA to 1535, LNAV/VNAV DA to 1748 and all MDA 20 feet; increase LNAV/VNAV all Cats visibility 1/8 mile.</div><div><div>MISSED APPROACH: Climb to 3000 direct YITAY and hold.</div></div></div>
--

ADU AWOS-3 <b>118.075</b>	DES MOINES APP CON <b>135.2 360.7</b>	UNICOM <b>122.8</b> (CTAF) <b>1</b>
------------------------------	--	--



3000 ↑	YITAY 	VGSI and RNAV glidepath not coincident (VGSI Angle 3.25/TCH 33).		4 NM Holding Pattern	
		AWCEX 2800 177° 2800		FAXUD 357° → 3000 ← 177° GP 3.00° TCH 40	
RW18		4.8 NM		5 NM	
CATEGORY	A	B	C	D	
LPV DA	1531-1	310 (400-1)	NA		
LNAV/ VNAV	DA	1744-1¾ 523 (600-1¾)	NA		
LNAV MDA	1720-1	499 (500-1)	NA		
 CIRCLING	1740-1 519 (600-1)	1880-1 659 (700-1)	NA		