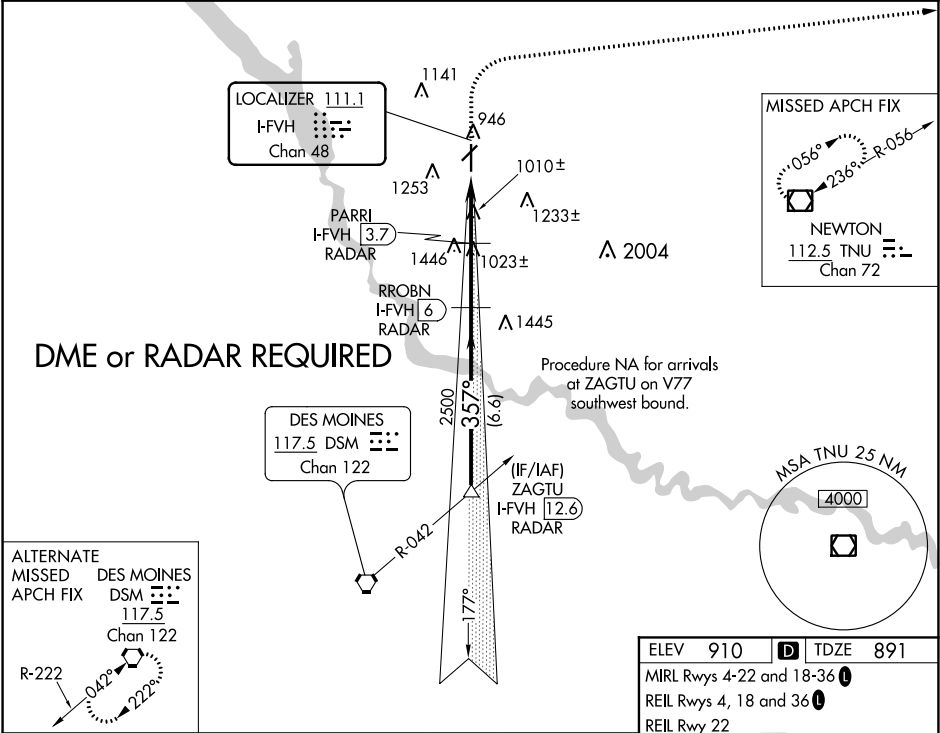


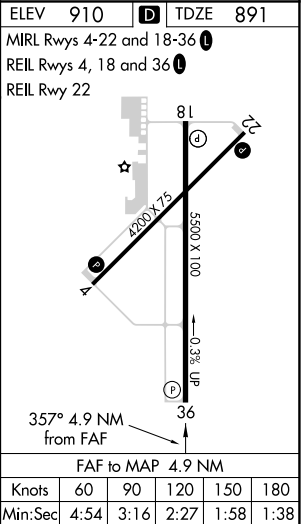
LOC/DME I-FVH <b>111.1</b> Chan <b>48</b>	APP CRS <b>357°</b>	Rwy Idg TDZE Apt Elev	<b>5500</b> <b>891</b> <b>910</b>
---	------------------------	-----------------------------	---

ILS or LOC RWY 36  
ANKENY RGNL (IKV)

CIRCLING Rwy 22 NA at night. DME or RADAR required.		MISSED APPROACH: Climb to 2000 then climbing right turn to 4000 direct TNU VOR/DME and hold.	
AWOS-3 <b>119.175</b>	DES MOINES APP CON <b>123.9 307.15</b>	CLNC DEL <b>126.65</b>	(CTAF) <b>122.90</b>



ZAGTU I-FVH 12.6 RADAR				
RROBN I-FVH 6 RADAR				
PARRI I-FVH 3.7 RADAR				
*I-FVH 2.1				
I-FVH 1.1				
GS 3.00° TCH 52				
3000 357° 2500 1760				
6.6 NM 2.3 NM 1.6 NM 1 NM				
CATEGORY	A	B	C	D
S-ILS 36	1091-3/4 200 (200-3/4)			
S-LOC 36	1260-1 369 (400-1)			
CIRCLING	1560-1 650 (700-1)	1560-1 3/4 650 (700-1 3/4)	1760-2 3/4 850 (900-2 3/4)	



NC-3, 03 DEC 2020 to 31 DEC 2020

NC-3, 03 DEC 2020 to 31 DEC 2020